

WAAS CH 90203 W13A	APP CRS 130°	Rwy Idg TDZE 2032 Apt Elev 2034
--	------------------------	---

RNAV (GPS) RWY 13

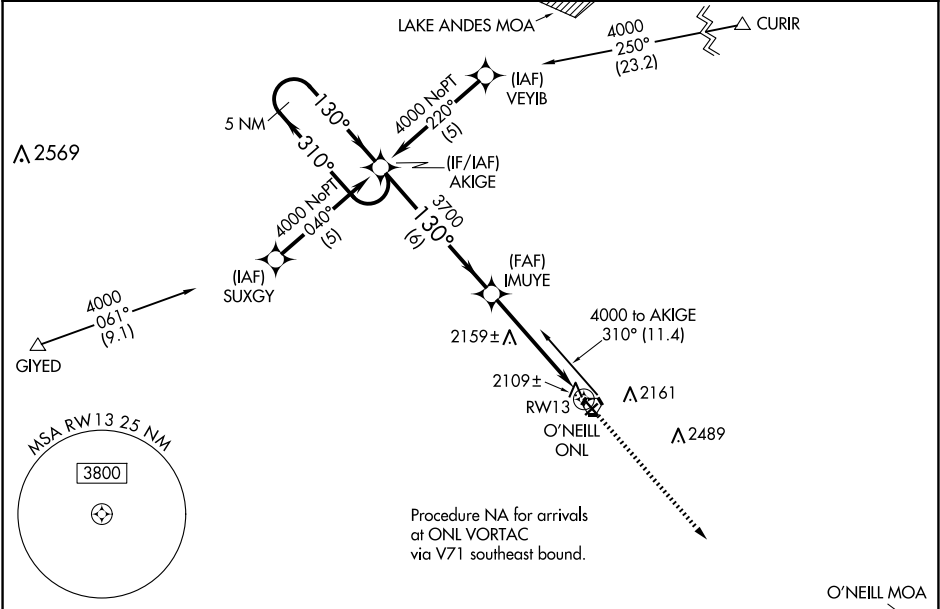
THE O'NEILL MUNI-JOHN L BAKER FLD (ONL)

⚠

Baro-VNAV NA when using Evelyn Sharp Fld altimeter setting. For uncompensated Baro-VNAV systems, LNAV/VNAV NA below -19°C (-2°F) or above 54°C (130°F). DME/DME RNP-0.3 NA. Helicopter visibility reduction below ¾ SM NA. When local altimeter setting not received, use Evelyn Sharp Fld altimeter setting and increase LPV DA to 2433 feet, LNAV/VNAV DA to 2505 feet; increase all MDAs 140 feet and visibility Cat C ½ SM. VDP NA when using Evelyn Sharp Fld altimeter setting. Night landing: Rwy 4, 22 NA.

MISSED APPROACH:
Climb to 4000 direct
AFSIC and hold.

AWOS-3 121.125	MINNEAPOLIS CENTER 128.0 257.95	UNICOM 122.8 (CTAF) 0
--------------------------	---	---------------------------------



ELEV 2034

TDZE 2032

REIL Rwys 13 and 31 0
MIRL Rwy 13-31 0

<table border="1"><tr><td>5 NM Holding Pattern</td><td>AKIGE</td><td>IMUYE</td><td>4000</td><td>AFSIC</td></tr><tr><td>←310°</td><td></td><td></td><td>↑</td><td>✱</td></tr><tr><td>130°→</td><td></td><td></td><td></td><td></td></tr><tr><td>GP 3.00°</td><td></td><td></td><td></td><td></td></tr><tr><td>TCH 39</td><td></td><td></td><td></td><td></td></tr><tr><td></td><td>6 NM</td><td>3.9 NM</td><td>1.1 NM</td><td></td></tr></table>										5 NM Holding Pattern	AKIGE	IMUYE	4000	AFSIC	←310°			↑	✱	130°→					GP 3.00°					TCH 39						6 NM	3.9 NM	1.1 NM	
5 NM Holding Pattern	AKIGE	IMUYE	4000	AFSIC																																			
←310°			↑	✱																																			
130°→																																							
GP 3.00°																																							
TCH 39																																							
	6 NM	3.9 NM	1.1 NM																																				
<table border="1"><tr><td>CATEGORY</td><td>A</td><td>B</td><td>C</td><td>D</td></tr><tr><td>LPV DA</td><td colspan="3">2308-1 276 (300-1)</td><td>NA</td></tr><tr><td>LNAV/VNAV DA</td><td colspan="3">2380-1¼ 348 (400-1¼)</td><td>NA</td></tr><tr><td>LNAV MDA</td><td colspan="3">2420-1 388 (400-1)</td><td>NA</td></tr><tr><td>CIRCLING</td><td colspan="2">2600-1 566 (600-1)</td><td>2680-1¾ 646 (700-1¾)</td><td>NA</td></tr></table>										CATEGORY	A	B	C	D	LPV DA	2308-1 276 (300-1)			NA	LNAV/VNAV DA	2380-1¼ 348 (400-1¼)			NA	LNAV MDA	2420-1 388 (400-1)			NA	CIRCLING	2600-1 566 (600-1)		2680-1¾ 646 (700-1¾)	NA					
CATEGORY	A	B	C	D																																			
LPV DA	2308-1 276 (300-1)			NA																																			
LNAV/VNAV DA	2380-1¼ 348 (400-1¼)			NA																																			
LNAV MDA	2420-1 388 (400-1)			NA																																			
CIRCLING	2600-1 566 (600-1)		2680-1¾ 646 (700-1¾)	NA																																			