

WAAS CH 53603 W19A	APP CRS 189°	Rwy Ldg TDZE Apt Elev	5000 803 803
--	------------------------	-----------------------------	---

RNAV (GPS) RWY 19
SHELBYVILLE MUNI (GEZ)

RNP APCH.

⚠ Circling Rwy 9, 27 NA at night. Baro-VNAV NA when using Indianapolis Intl altimeter setting. For uncompensated Baro-VNAV systems, LNAV/VNAV NA below -16°C or above 54°C. VDP NA when using Indianapolis Intl altimeter setting. When local altimeter setting not received, use Indianapolis Intl altimeter setting: increase LPV DA to 1152 feet and LNAV/VNAV DA to 1199 feet; increase all MDA 60 feet and LNAV Cat C/D visibility $\frac{1}{8}$ SM and Circling Cat D visibility $\frac{1}{4}$ SM.

MISSED APPROACH:
Climb to 3000 direct
WAGSE and hold.

ASOS 121.55	INDIANAPOLIS APP CON 127.15 317.8	UNICOM 122.8 (CTAF) 0
-----------------------	---	---------------------------------

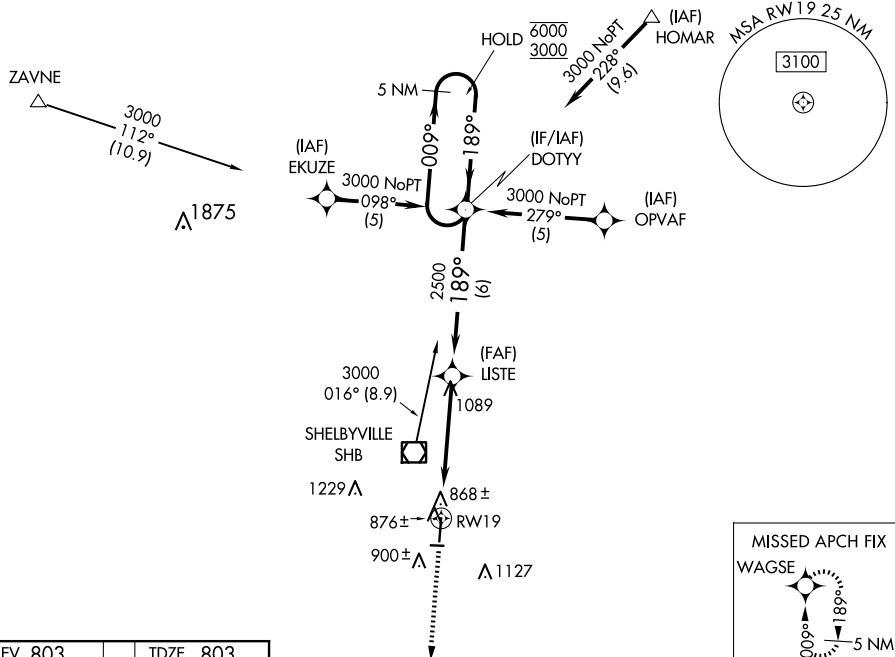


Diagram illustrating the intersection of MRL Rwy 1-19 and REIL Rwy 1 and 19. The crossing is labeled "ELEV 803" and "TDZE 803". The crossing is 5000 X 100 feet. The crossing is labeled "MIRL Rwy 1-19" and "REIL Rwy 1 and 19". The crossing is labeled "0.4% UP" and "2671 X 190". The crossing is labeled "61" and "189°".

