

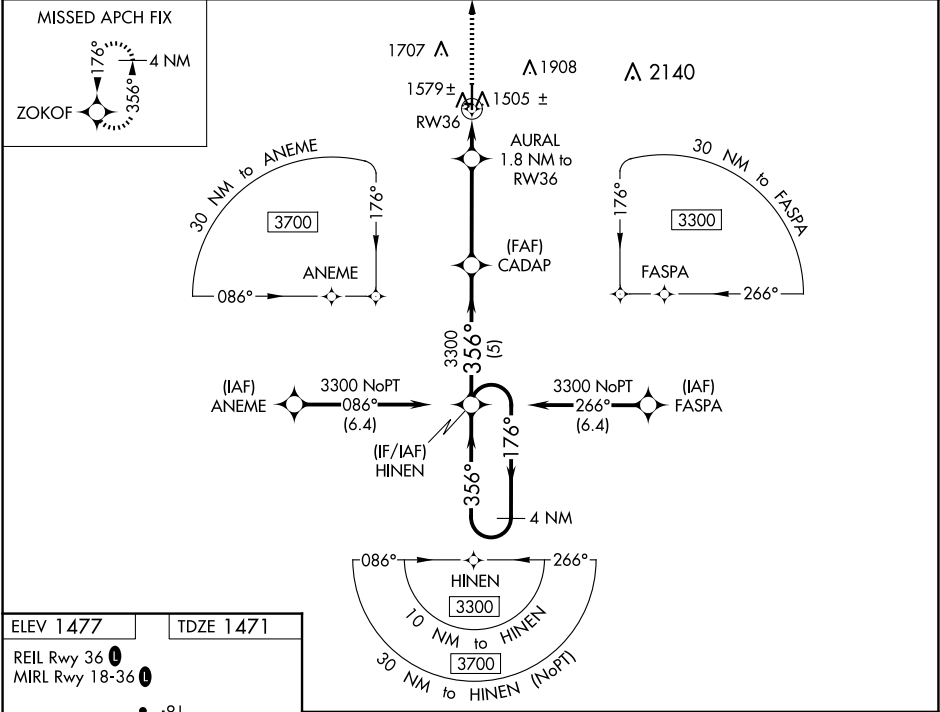
WAAS CH <b>61337</b> <b>W36A</b>	APP CRS <b>356°</b>	Rwy Idg TDZE Apt Elev	<b>5001</b> <b>1471</b> <b>1477</b>
--	------------------------	-----------------------------	---

RNAV (GPS) RWY 36

ALVA RGNL (AVK)

RNP APCH-GPS.	For uncompensated Baro-VNAV systems, LNAV/VNAV NA below -17°C (2°F) or above 54°C (130°F). When local altimeter setting not received, use Vance AFB altimeter setting and increase all DA 127 feet and all MDA 140 feet; increase LPV all Cats, LNAV/VNAV all Cats and LNAV Cat C visibility ¾ mile and Circling Cat C visibility ½ mile. Baro-VNAV and VDP NA when using Vance AFB altimeter setting. Circling to Rwy 9/27 NA.	MISSED APPROACH: Climb to 3300 direct ZOKOF and hold.
---------------	---	--

AWOS-3PT <b>121.125</b>	VANCE APP CON ★ <b>126.75 346.325</b>	UNICOM <b>122.8 (CTAF) 0</b>
----------------------------	--	---------------------------------



3300 ZOKOF *LNAV only.				
CATEGORY	A	B	C	D
LPV DA	1721-7/8		250 (300-7/8)	NA
LNAV/VNAV DA	1751-1		280 (300-1)	NA
LNAV MDA	1840-1		369 (400-1)	NA
CIRCLING	1980-1 503 (600-1)	2120-1 643 (700-1)	2220-2¼ 743 (800-2¼)	NA

SC-1, 10 JUL 2025 to 07 AUG 2025

SC-1, 10 JUL 2025 to 07 AUG 2025