

PLYMOUTH, MICHIGAN

AL-5508 (FAA)

24025

APP CRS 183°	Rwy Idg TDZE Apt Elev	2302 N/A 696
------------------------	-----------------------------	---

RNAV (GPS)-B

CANTON-PLYMOUTH-METTETAL (1D2)

RNP APCH.

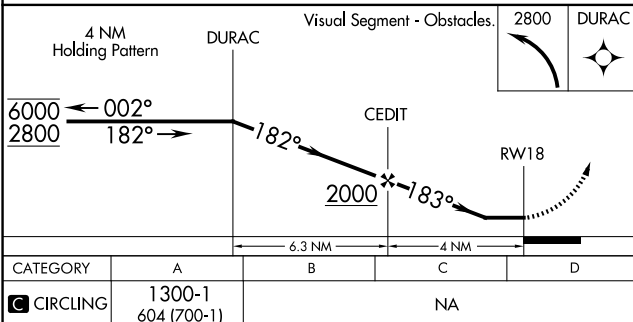
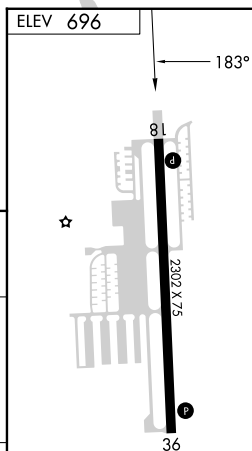
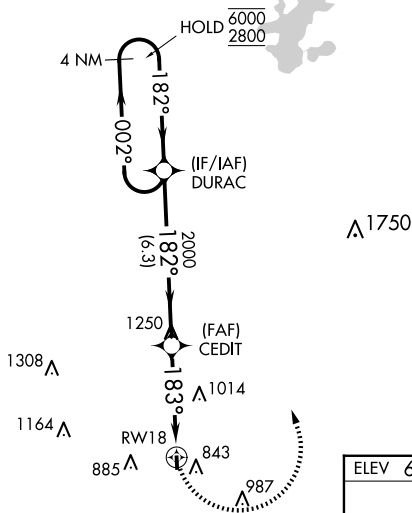
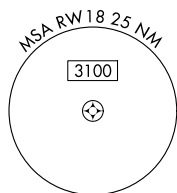


Procedure NA at night. Use Willow Run altimeter setting.
Helicopter visibility reduction below 1 SM NA.

MISSED APPROACH:
Climbing left turn to 2800
direct DURAC and hold.

YIP ASOS
127.425

DETROIT APP CON
118.95 284.0

UNICOM
122.7 (CTAF) **L**

PLYMOUTH, MICHIGAN

Orig-A 19JUL18

CANTON-PLYMOUTH-METTETAL (1D2)

RNAV (GPS)-B

42°21'N-83°27'W

EC-1, 10 JUL 2025 to 07 AUG 2025