

| | | |
|--|------------------------|---|
| WAAS CH 77601 W06A | APP CRS 059° | Rwy Idg TDZE 831 Apt Elev 839 |
|--|------------------------|---|

RNAV (GPS) RWY 6

ANN ARBOR MUNI (ARB)

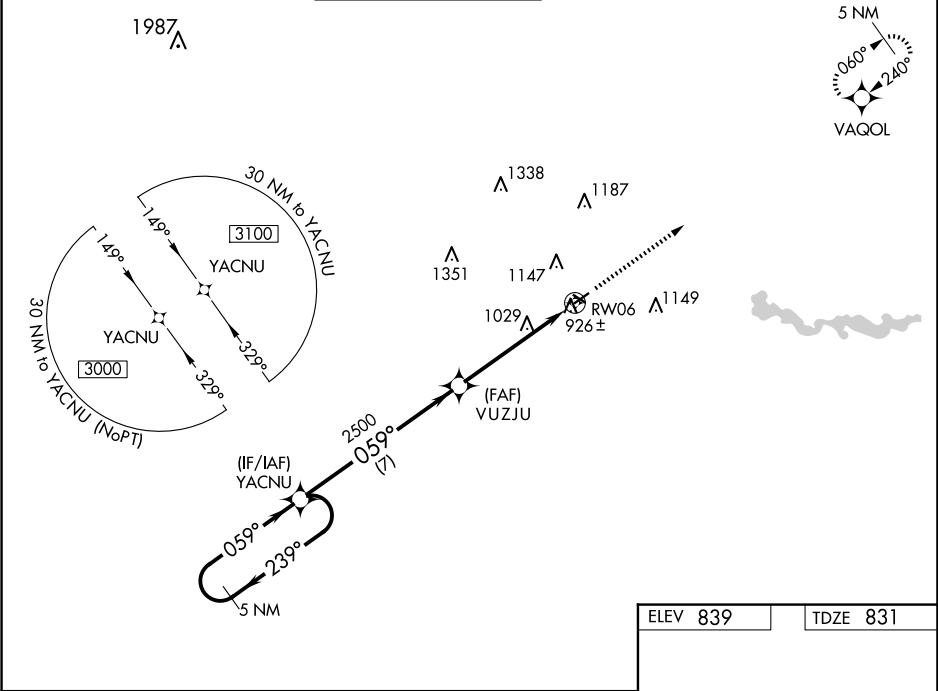
▼

⚠

For uncompensated Baro-VNAV systems, LNAV/VNAV NA below -16°C or above 38°C. VDP and Baro-VNAV NA when using Willow Run altimeter setting. When local altimeter setting not received, use Willow Run altimeter setting and increase all DA/MDA 40 feet; increase LNAV Cats C and D visibility ½ SM.

MISSED APPROACH: Climb to 3000 direct VAQOL and hold.

| | | | | | |
|-----------------------|--|--|-------------------------|--------------------------|------------------------|
| ATIS 134.55 | DETROIT APP CON 118.95 284.0 | ANN ARBOR TOWER ★ 120.3 (CTAF) 0 | GND CON 121.6 | CLNC DEL 121.6 | UNICOM 123.0 |
|-----------------------|--|--|-------------------------|--------------------------|------------------------|



VGSI and RNAV glidepath not coincident (VGSI Angle 3.00/TCH 20).

3000 VAQOL

5 NM Holding Pattern

YACNU

VUZJU

RW06

GP 3.00° TCH 40

2500

2500

1.6 NM to RW06

7 NM

3.5 NM

1.6 NM

CATEGORY

A

B

C

D

LPV DA

1081-1

250 (300-1)

LNAV/VNAV DA

1097-1

266 (300-1)

LNAV MDA

1360-1

529 (600-1)

1360-1½

529 (600-1½)

ELEV 839

TDZE 831

TWR

3505 X 75

0-3° UP 80

059°

MIRL Rwy 6-24 0

REIL Rwy 6 0