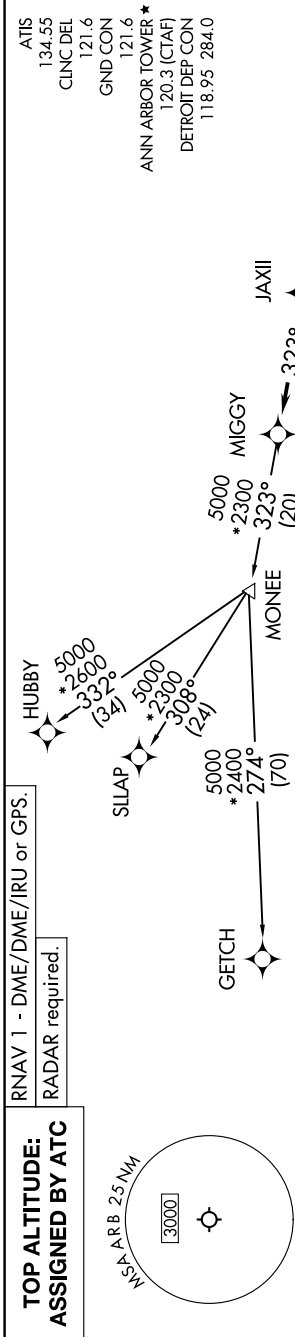


EC-1, 10 JUL 2025 to 07 AUG 2025



TAKEOFF MINIMUMS:
Rwys 1,2, 30: NA - Environmental.
Rwys 6, 24: Standard.

NOTE: Jet departures at/above 10000, maintain 280K until advised by ATC.
NOTE: GETCH TRANSITION: For use by KMKE area arrivals only, or as assigned by ATC.

DEPARTURE ROUTE DESCRIPTION

TAKEOFF RUNWAY 6: Climb on heading 060° or as assigned by ATC, thence....
TAKEOFF RUNWAY 24: Climb on heading 240° or as assigned by ATC, thence....
....for RADAR vectors to JAXII, then on track 323° to MIGGY, then on (transition).
Maintain 17000 or as assigned by ATC, expect filed altitude 10 minutes after departure.

GETCH TRANSITION (MIGGY3.GETCH):
HUBBY TRANSITION (MIGGY3.HUBBY):
SILAP TRANSITION (MIGGY3.SILAP):

NOTE: Chart not to scale.

EC-1, 10 JUL 2025 to 07 AUG 2025