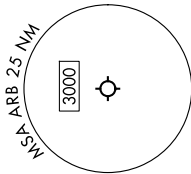
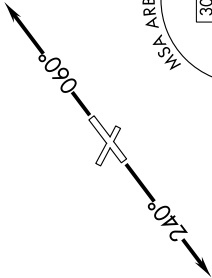


DETROIT DEP CON  
118.95 284.0  
ATIS  
134.55  
CLNC DEL  
121.6  
GND CON  
121.6  
ANN ARBOR TOWER ★  
120.3 (CTAF)



MALTB  
2200



(40)  
10000  
2200  
\*2200  
090°

BROKK  
10000  
\*2200  
098°  
(42) LINCON

RNAV-1 DME/DME/IRU or GPS.  
RADAR required.

TOP ALTITUDE:  
ASSIGNED BY ATC

HHOWE FOUR DEPARTURE (RNAV)  
(HHOWE4.HHOWE) 16MAY24

ANN ARBOR MUNI (ARB)  
ANN ARBOR, MICHIGAN

NOTE: Turbojet departures at/above 10000, maintain 280K until advised by ATC.  
NOTE: BROKK TRANSITION: For use by flights filed at or below FL270, or as assigned by ATC.

TAKEOFF MINIMUMS:  
Rwy 6, 24: Standard.  
Rwy 12, 30: NA - Environmental.

NOTE: Chart not to scale.

DEPARTURE ROUTE DESCRIPTION



TAKEOFF RUNWAY 6: Climb on heading 060° or as assigned by ATC, thence....  
TAKEOFF RUNWAY 24: Climb on heading 240° or as assigned by ATC, thence....  
....for RADAR vectors to cross MALTB at or above 2200, then on track 094° to HHOWE, then on (transition).  
Maintain ATC assigned altitude, expect filed altitude 10 minutes after departure.  
BROKK TRANSITION (HHOWE4.BROKK):  
LINCON TRANSITION (HHOWE4.LINCON):

ANN ARBOR, MICHIGAN  
ANN ARBOR MUNI (ARB)