

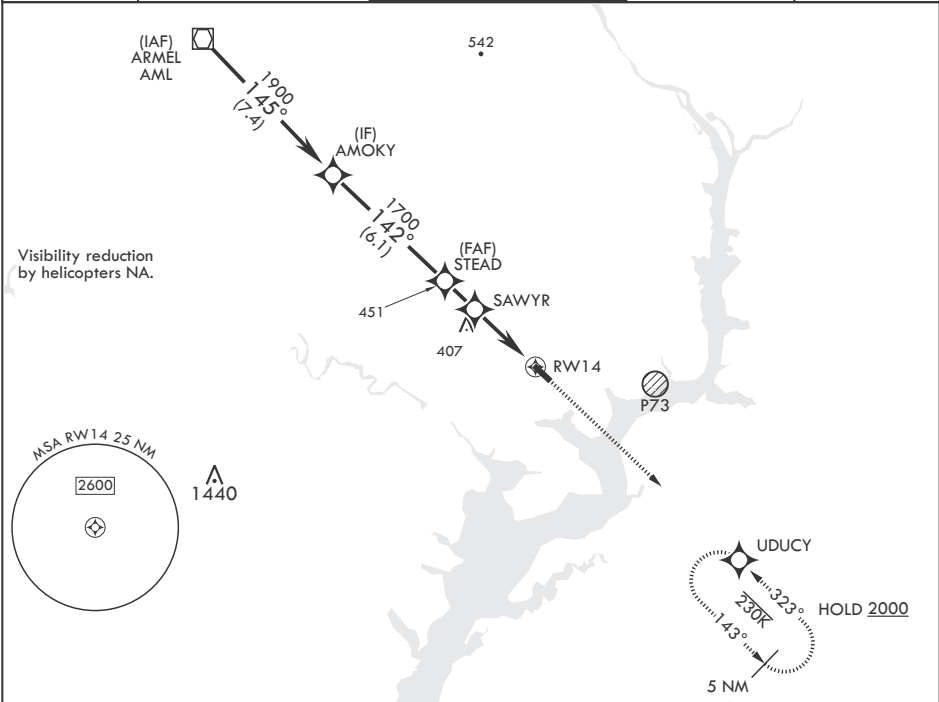
APCH CRS	Rwy Idg	4930
142°	TDZE	60
	Arprt Elev	74

- (USA)

DAVISON AAF (KDAV)

RNP APCH - GPS	MISSED APPROACH: Climb to 2000 direct UDUY and hold.
* If local altimeter setting not received, use Ronald Reagan Washington National altimeter setting.	

ATIS	POTOMAC APP CON	TOWER *	GND CON	CLNC DEL
128.175	118.95 319.1	124.275 (CTAF) 0 229.4	121.9 351.8	351.8



Visual Segments - Obstacles					2000 ↑ UDUY ⊙	ELEV 74	TDZE 60
VOR/DME						Rwy 14 Idg 4930' Rwy 32 Idg 4529'	
CATEGORY	A	B	C	D			
LNAV MDA	660-1	600 (600-1)	660-1¾ 600 (600-1¾)	660-2 600 (600-2)			
CIRCLING	740-1	666 (700-1)	740-1¾ 666 (700-1¾)	760-2¼ 686 (700-2¼)			
*RONALD REAGAN WASHINGTON NATIONAL ALTIMETER SETTING MINIMUMS							
LNAV MDA*	700-1	640 (700-1)	700-2	640 (700-2)			
CIRCLING*	780-1	706 (800-1)	780-2 706 (800-2)	800-2¼ 726 (800-2¼)			
					HIRL all rwys		