

FORT BELVOIR, VIRGINIA

ILS or LOC RWY 32

LOC/DME I-DAA	APCH CRS	Rwy Idg
108.9	322°	4529
Chan 26		TDZE 68
		Arpt Elev 74

[USA]

DAVISON AAF (KDAV)

RADAR required for procedure entry from DCA VOR.

- * When ALS inop, increase RVR to 45, vis to 7/8 mile.
- ** When ALS inop, increase CAT AB RVR to 55, vis to 1 mile, CAT CD vis to 1 1/8 miles.
- *** When ALS inop, increase CAT AB RVR to 55, vis to 1 mile, CAT CD vis to 1 1/8 miles.

MALSF

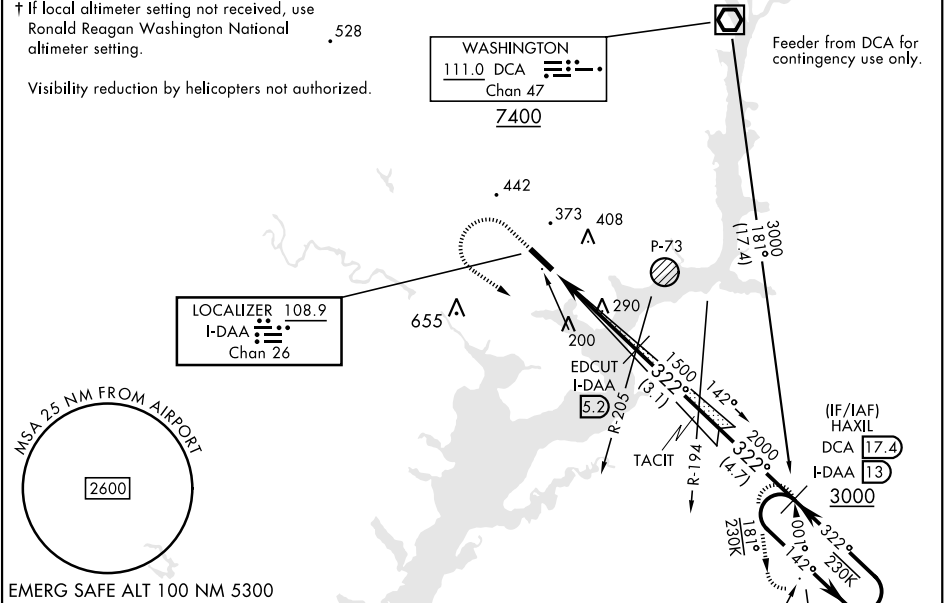


MISSED APPROACH: Climb to 800, then climbing left turn to 3000 direct to HAXIL (DCA R-181/17.4 DME) and hold. Continue climb in hold to 3000.

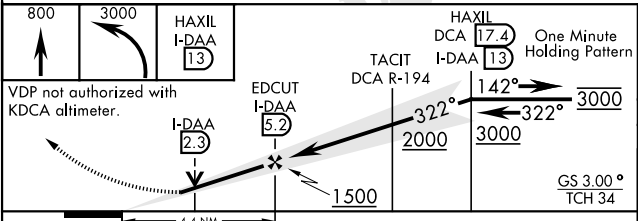
ATIS	POTOMAC APP CON	TOWER ★	GND CON	CLNC DEL
128.175	118.95 319.1	124.275 (CTAF) 0 229.4	121.9 351.8	351.8

† If local altimeter setting not received, use Ronald Reagan Washington National altimeter setting.

Visibility reduction by helicopters not authorized.



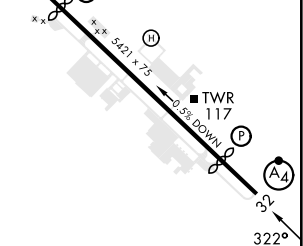
EMERG SAFE ALT 100 NM 5300



CATEGORY	A	B	C	D
S-ILS 32*	348/40	280	(300-3/4)	
S-LOC 32**	580/40	512 (600-3/4)	580-1 1/4	512 (600-1 1/4)
CIRCLING	680-1 606 (700-1)	720-1 646 (700-1)	760-2 686 (700-2)	1000-3 926 (1000-3)
† RONALD REAGAN WASHINGTON NATIONAL ALTIMETER SETTING MINIMUMS				
S-ILS 32	388/40	320	(400-3/4)	
S-LOC 32***	620/40	552 (600-3/4)	620-1 1/8	552 (600-1 1/8)
CIRCLING	720-1 646 (700-1)	760-1 686 (700-1)	800-2 726 (800-2)	1040-3 966 (1000-3)

ELEV 74	TDZE 68
---------	---------

Rwy 14 Idg 4930'
Rwy 32 Idg 4529'



HIRL Rwy 14-32	
FAF to MAP 4.4 NM	
Knots	60 90 120 150 180
Min:Sec	4:24 2:56 2:12 1:46 1:28

FORT BELVOIR, VIRGINIA

38°43'N-77°11'W

DAVISON AAF (KDAV)

Amtd 1 23JAN25

ILS or LOC RWY 32

NE-3, 10 JUL 2025 to 07 AUG 2025

NE-3, 10 JUL 2025 to 07 AUG 2025