

WAAS CH 69638 W18A	APP CRS 182°	Rwy Idg 4002 TDZE 541 Apt Elev 541
--	------------------------	---

RNAV (GPS) RWY 18

GREENVILLE (GR'E)

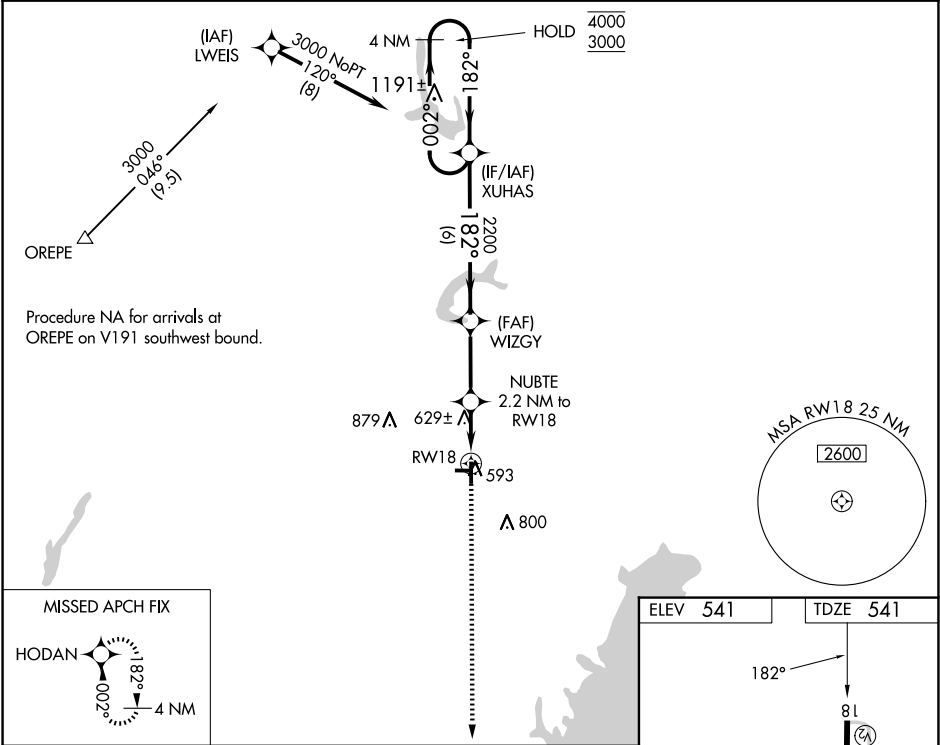
RNP APCH - GPS.

NA

Circling NA to Rwy 9 and 27. Baro-VNAV and VDP NA when using Salem altimeter setting. For uncompensated Baro-VNAV systems, LNAV/VNAV NA below -16°C or above 54°C. Procedure NA at night. When local altimeter setting not received, use Salem altimeter setting and increase LPV DA to 905 feet; increase LNAV/VNAV DA to 905 feet; increase all MDAs 60 feet and LNAV visibility Cat C/D ¼ SM, and Circling visibility Cat D ¼ SM.

MISSED APPROACH: Climb to 2300 direct HODAN and hold.

AWOS-AV 123.05	KANSAS CITY CENTER 124.3 269.15	UNICOM 123.05 (CTAF) 0
--------------------------	---	----------------------------------



4 NM Holding Pattern		VGSI and RNAV glidepath not coincident (VGSI Angle 3.00/TCH 27).			2300	HODAN
XUHAS		WIZGY		NUBTE	RW18	
4000 ← 002°		182° →		2200	2.2 NM to RW18	1.2 NM to RW18
3000		182°		2200	1280	RW18
GP 3.00° TCH 40		6 NM		2.9 NM	1 NM	1.2 NM
CATEGORY	A	B	C	D		
LPV DA	848-1		307 (400-1)			
LNAV/VNAV DA	848-1		307 (400-1)			
LNAV MDA	940-1 399 (400-1)		940-1 399 (400-1 1/8)			
CIRCLING	980-1 439 (500-1)		1000-1 459 (500-1)		1220-2 679 (700-2)	
					1240-2 699 (700-2 1/4)	

