

WAAS CH <b>62824</b> <b>W28A</b>	APP CRS <b>282°</b>	Rwy Idg TDZE <b>969</b> Apt Elev <b>974</b>
--	------------------------	---

RNAV (GPS) RWY 28

POLK COUNTY/CORNELIUS MOORE FLD (4A4)

RNP APCH.

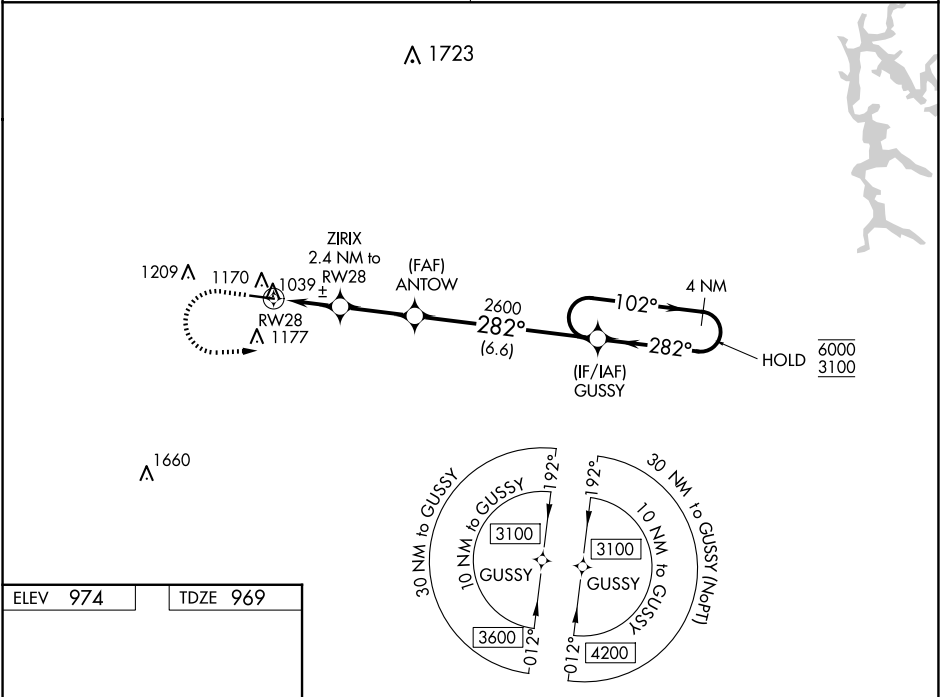
▼

▲ NA

Baro-VNAV and VDP NA when using Cartersville altimeter setting. Rwy 28 helicopter visibility reduction below  $\frac{3}{4}$  SM NA. For uncompensated Baro-VNAV systems, LNAV/VNAV NA below -8°C or above 54°C. Obtain local altimeter setting on CTAF, when not received, use Cartersville altimeter setting: increase LPV DA to 1287 feet; increase LNAV/VNAV DA to 1353 feet and all visibility  $\frac{1}{2}$  SM; increase all MDAs 80 feet and visibility Cats C and D  $\frac{1}{2}$  SM.

MISSED APPROACH:  
Climb to 1500 then climbing left turn to 3100 direct GUSSY and hold.

ATLANTA CENTER <b>124.5 270.325</b>	UNICOM <b>122.8 (CTAF)</b>
--	-------------------------------



ELEV 974

TDZE 969

1500

3100

GUSSY

\*LNAV only.

\*1 NM to RWY28

ZIRIX 2.4 NM to RWY28

ANTOW 2600

GUSSY 4 NM Holding Pattern

1740\*

2600

102°

282°

6000

3100

GP 3.00°

TCH 41

CATEGORY	A	B	C	D
LPV DA	1219-1	250 (300-1)		
LNAV/VNAV DA	1285-1	316 (400-1)		
LNAV MDA	1300-1	331 (400-1)		

MIRL Rwy 10-28