

WAAS CH <b>49223</b> <b>W10A</b>	APP CRS <b>102°</b>	Rwy Idg TDZE <b>974</b> Apt Elev <b>974</b>
--	------------------------	---

RNAV (GPS) RWY 10

POLK COUNTY/CORNELIUS MOORE FLD (4A4)

RNP APCH.

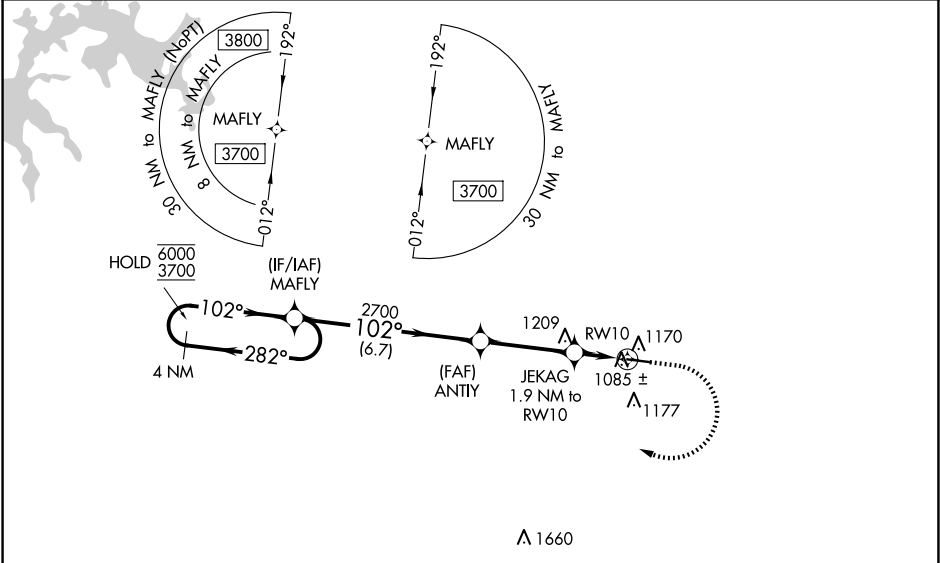
▽

NA

Baro-VNAV and VDP NA when using Cartersville altimeter setting.  
For uncompensated Baro-VNAV systems, LNAV/VNAV NA below -8°C or above 54°C. Obtain local altimeter setting on CTAF, when not received, use Cartersville altimeter setting and increase LPV DA to 1292 feet; increase LNAV/VNAV DA to 1424 feet and all visibilities ¼ SM; increase all MDA 80 feet; increase LNAV visibility Cats C and D ⅜ SM.

MISSED APPROACH: Climb to 1600 then climbing right turn to 3700 direct MAFLY and hold.

ATLANTA CENTER <b>124.5 270.325</b>	UNICOM <b>122.8 (CTAF)</b> 
--	---



ELEV 974

TDZE 974

4 NM Holding Pattern		MAFLY	ANTTY	JEGAG	RWY 10
6000	3700	2700	1600	1600	1600
GP 3.00°	TCH 41				
6.7 NM		3.4 NM	0.9 NM	1 NM	
CATEGORY	A	B	C	D	
LPV DA	1224-1		250 (300-1)		
LNAV/VNAV DA	1356-1½		382 (400-1½)		
LNAV MDA	1340-1		366 (400-1)		

1600

3700

MAFLY

\*LNAV only.

102°

5060 X 75

0.7% UP

28

MIRL Rwy 10-28 