

|            |         |          |      |
|------------|---------|----------|------|
| VORTAC SLT | APP CRS | Rwy Idg  | 4300 |
| 113.9      | 264°    | TDZE     | 1934 |
| Chan 86    |         | Apt Elev | 1934 |

VOR RWY 28

ST MARYS MUNI (OYM)

⚠

NA

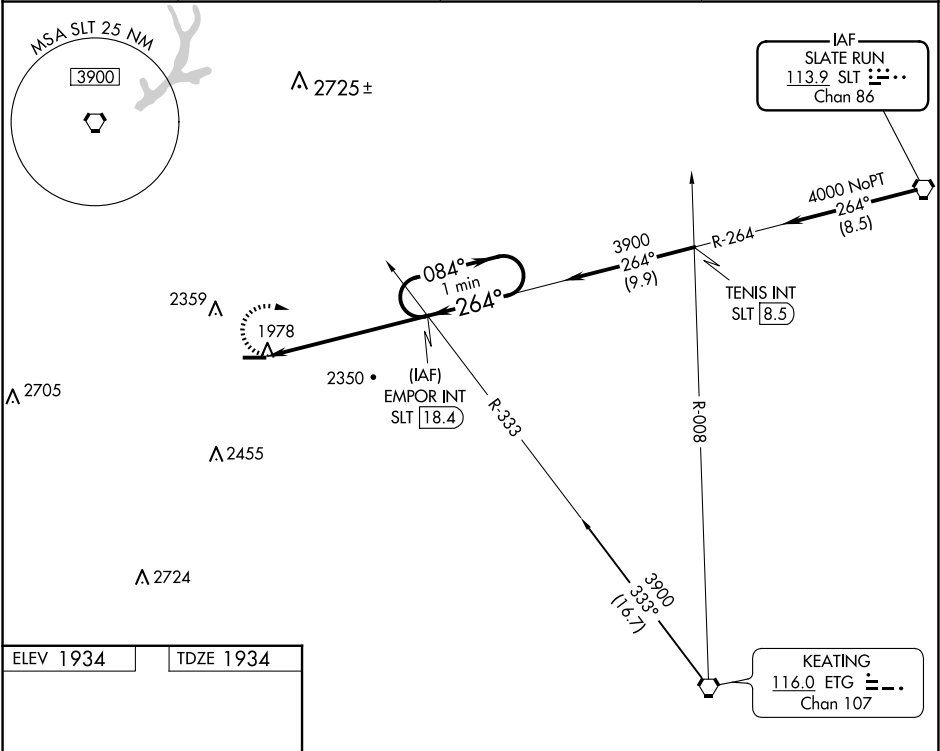
⚠ -36°C

Night landing: Rwy 28 NA. Helicopter visibility reduction below 1 SM NA. When local altimeter setting not received, use Bradford altimeter setting and increase all MDA 240 feet, and S-28 Cat B and Circling Cat B/C visibility ¼ mile and S-28 Cat C/D ½ mile. Inoperative table does not apply to Cats C/D.

MALS

MISSED APPROACH:  
Climbing right turn to 3900  
via SLT R-264 to EMPOR  
INT/18.4 DME and hold.

|         |                  |                  |                |
|---------|------------------|------------------|----------------|
| AWOS-3P | CLEVELAND CENTER | ALTOONA CLNC DEL | UNICOM         |
| 118.05  | 126.725 291.65   | 122.4            | 122.7 (CTAF) 0 |



ELEV 1934

TDZE 1934

|         |      |      |      |      |      |
|---------|------|------|------|------|------|
| Knots   | 60   | 90   | 120  | 150  | 180  |
| Min:Sec | 6:06 | 4:04 | 3:03 | 2:26 | 2:02 |

3900

SLT R-264

EMPOR INT

EMPOR INT SLT 18.4

One Minute Holding Pattern

084° → 3900

← 264°

3.00° TCH 40

6.1 NM

| CATEGORY | A       | B            | C            | D            |
|----------|---------|--------------|--------------|--------------|
| S-28     | 2820-1  | 886 (900-1)  | 2820-2½      | 886 (900-2½) |
| CIRCLING | 2820-1¼ | 886 (900-1¼) | 2820-2¾      | 2820-3       |
|          |         |              | 886 (900-2¾) | 886 (900-3)  |