

LOC/DME I-OYM

108.9

Chan 26

APP CRS

281°

Rwy Idg

4300

TDZE

1934

Apt Elev

1934

LOC RWY 28

ST MARYS MUNI (OYM)

DME required.

NA

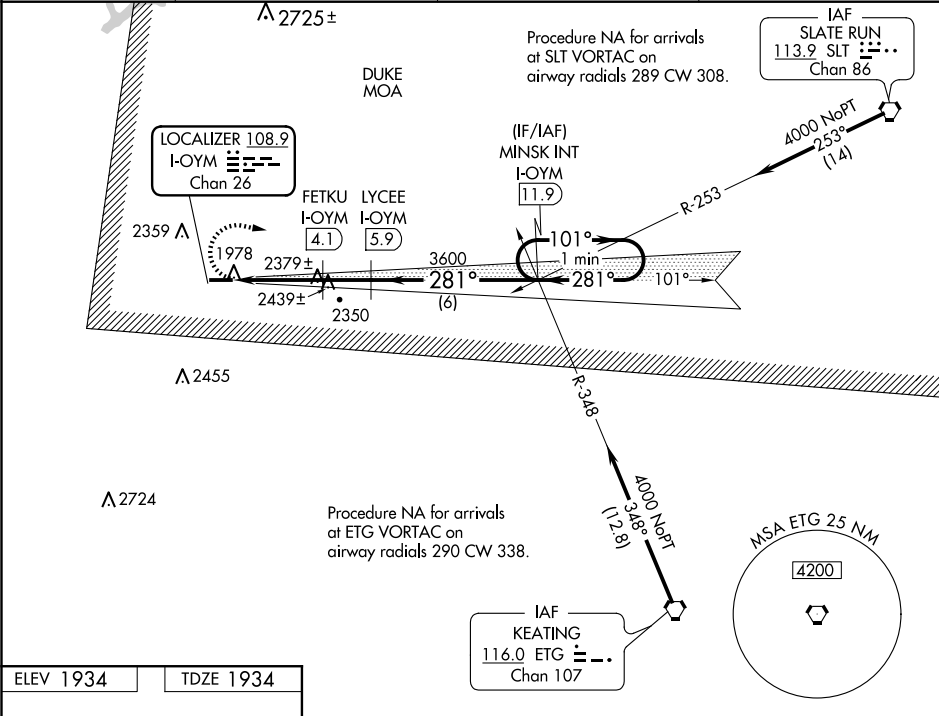
Inop table does not apply to Cat A. Rwy 28 helicopter visibility reduction below ¾ SM NA. VDP NA when using Bradford altimeter setting. When local altimeter setting not received, use Bradford altimeter setting and increase all MDA 240 feet and S-28 Cat B visibility ¼ SM, Cat C/D ½ SM and Circling Cat A ¼ SM, Cat B ½ SM, Cat C ¾ SM.
-36°C For inop ALS, increase S-28 Cat C/D visibility to 2 ½ SM. For inop ALS when using Bradford altimeter setting, increase S-28 Cat C/D visibility to 3 SM.

MALS

4

MISSED APPROACH: Climbing right turn to 4000 on I-OYM east course to MINSK INT/ 11.9 DME and hold.

AWOS-3P	CLEVELAND CENTER	ALTOONA CLNC DEL	UNICOM
118.05	126.725 291.65	122.4	122.7 (CTAF) 0



ELEV 1934	TDZE 1934
-----------	-----------

