

APP CRS  
230°

Rwy Idg  
TDZE  
Apt Elev

2855  
142  
150

RNAV (GPS) RWY 23

Pine Valley (19N)

RNP APCH.

NA

Rwy 23 helicopter visibility reduction below 1 SM NA. Use Mount Holly altimeter setting; if not received use Philadelphia Intl altimeter setting and increase all MDA 20 feet. Procedure NA at night.

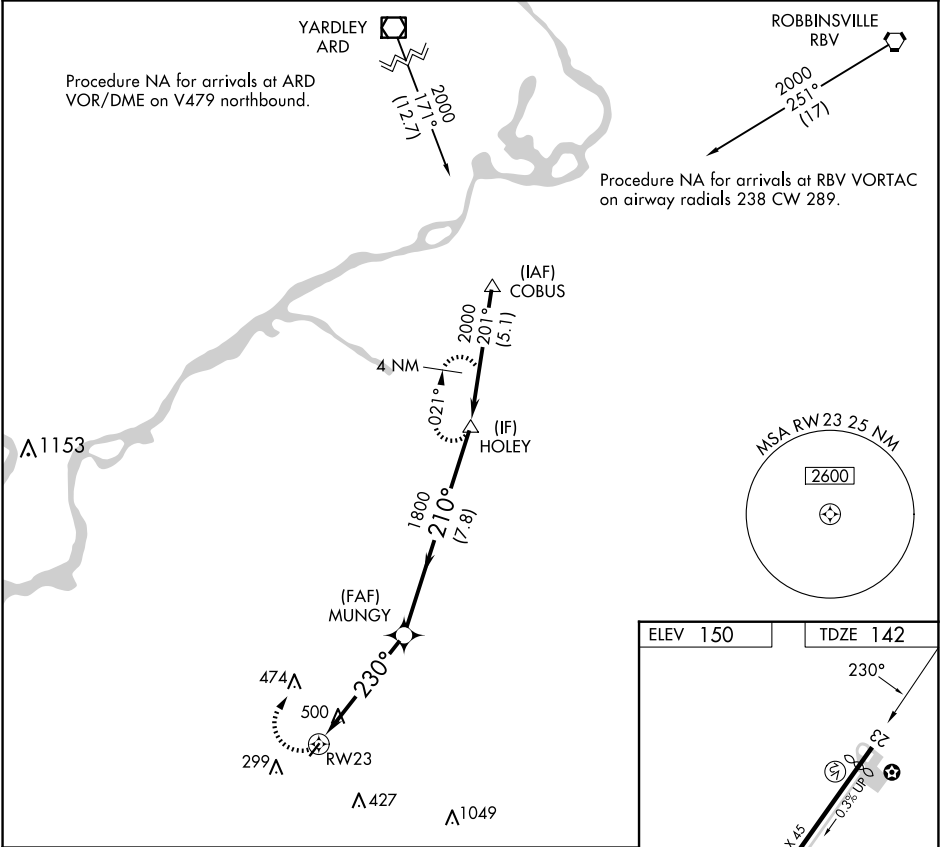
MISSED APPROACH: Climbing right turn to 2000 direct HOLEY and hold.

MC GUIRE APP CON

126.475 363.8

UNICOM

123.0 (CTAF)



2000

HOLEY

Visual Segment - Obstacles.

HOLEY

RWY 23

MUNGY

210°

2000

5 NM

7.8 NM

CATEGORY	A	B	C	D
INAV MDA	840-1	698 (700-1)	NA	

REIL Rwy 5 and 23

MIRL Rwy 5-23