

VOR/DME AHN
116.95
Chan **116**(Y)

APP CRS
319°

Rwy Idg
TDZE **951**
Apt Elev **951**

VOR RWY 35

JACKSON COUNTY (JCA)

DME required.

▼

▲

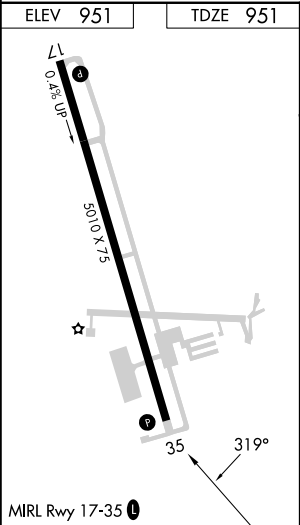
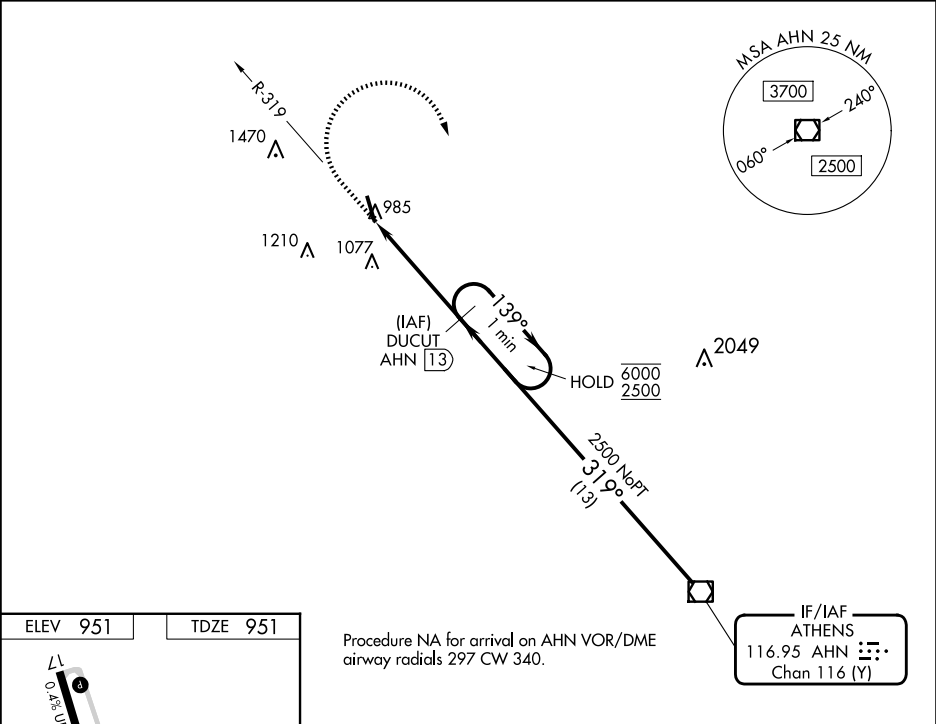
Circling NA for Cat D southwest of Rwy 17-35. Rwy 35 helicopter visibility reduction below 1 SM NA. Procedure NA at night. When local altimeter setting not received, use Winder altimeter setting and increase all MDA 40 feet and S-35 Cats C/D visibility ½ SM.



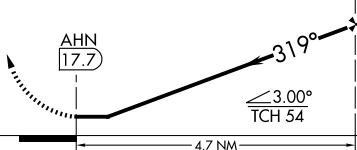
MISSED APPROACH: Climb to 1700 then climbing right turn to 2500 on heading 200° and AHN VOR/DME R-319 to DUCUT/AHN 13 DME and hold.

AWOS-3PT
118.125

ATLANTA APP CON ★
132.475 291.1

UNICOM
122.975 (CTAF) 0



1700	2500	AHN R-319	DUCUT AHN 13		
				One Minute Holding Pattern	
					
CATEGORY	A	B	C	D	
S-35	1380-1 429 (500-1)		1380-1¼ 429 (500-1¼)		
CIRCLING	1440-1 489 (500-1)		1580-1¾ 629 (700-1¾)		1580-2 629 (700-2)