

| | | |
|---|------------------------|---|
| WAAAS CH 82704 W35A | APP CRS 348° | Rwy Idg 5010 TDZE 951 Apt Elev 951 |
|---|------------------------|---|

RNAV (GPS) RWY 35

JACKSON COUNTY (JCA)

RNP APCH-GPS.

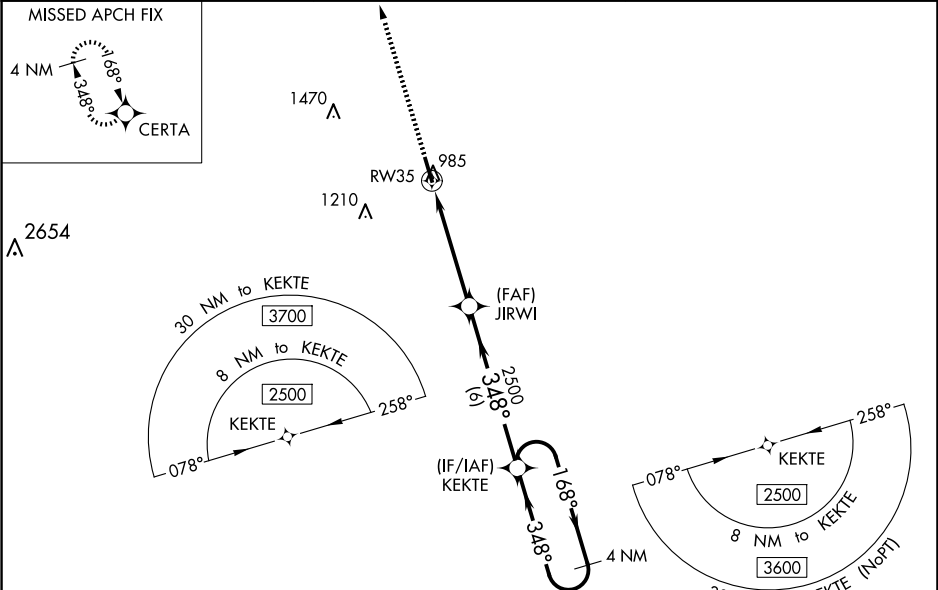
▼

▲

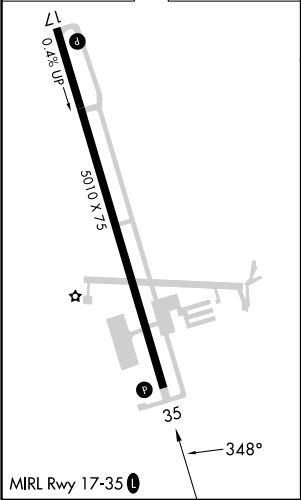
For uncompensated Baro-VNAV systems, LNAV/VNAV NA below -16°C or above 54°C. Circling NA for Cat D west of Rwy 17-35. Baro-VNAV and VDP NA when using Winder altimeter setting. Rwy 17 helicopter visibility reduction below ¼ SM NA. When local altimeter setting not received, use Winder altimeter setting; increase LPV DA to 1232 feet and visibility all Cats ½ SM; increase LNAV/VNAV DA to 1241 feet and visibility all Cats ½ SM; increase all MDAs 40 feet and LNAV visibility Cats C/D ½ SM.

MISSED APPROACH:
Climb to 3700 direct
CERTA and hold.

| | | |
|----------------------------|--|-----------------------------------|
| AWOS-3PT 118.125 | ATLANTA APP CON★ 132.475 291.1 | UNICOM 122.975 (CTAF) 0 |
|----------------------------|--|-----------------------------------|



| | |
|-----------------|-----------------|
| ELEV 951 | TDZE 951 |
|-----------------|-----------------|



| | | | | | |
|--------------|--------|-------------|-------------------------------|-----------------------|----------------------|
| 3700 | CERTA | JIRWI | 2500 | KEKTE | 4 NM Holding Pattern |
| ↑ | ✧ | 2500 | 1.1 NM to RW35 | 348° | 168° → 2500 |
| | | | 348° | | ← 348° |
| | | | 2500 | | GP 3.00° |
| | | | | | TCH 54 |
| | | | 1.1 NM | 3.6 NM | 6 NM |
| CATEGORY | A | B | C | D | |
| LPV DA | | 1201-7⁄8 | 250 (300-7⁄8) | | |
| LNAV/VNAV DA | | 1210-7⁄8 | 259 (300-7⁄8) | | |
| LNAV MDA | 1340-1 | 389 (400-1) | 1340-1 1⁄8 | 389 (400-1 1⁄8) | |
| CIRCLING | 1440-1 | 489 (500-1) | 1580-1 3⁄4 629 (700-1 3⁄4) | 1580-2 629 (700-2) | |