

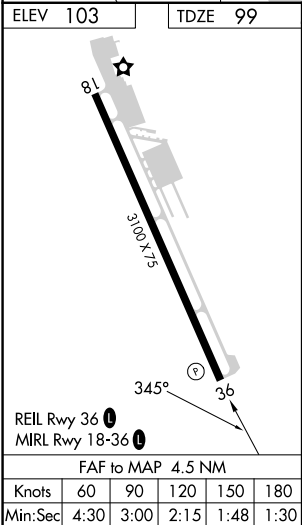
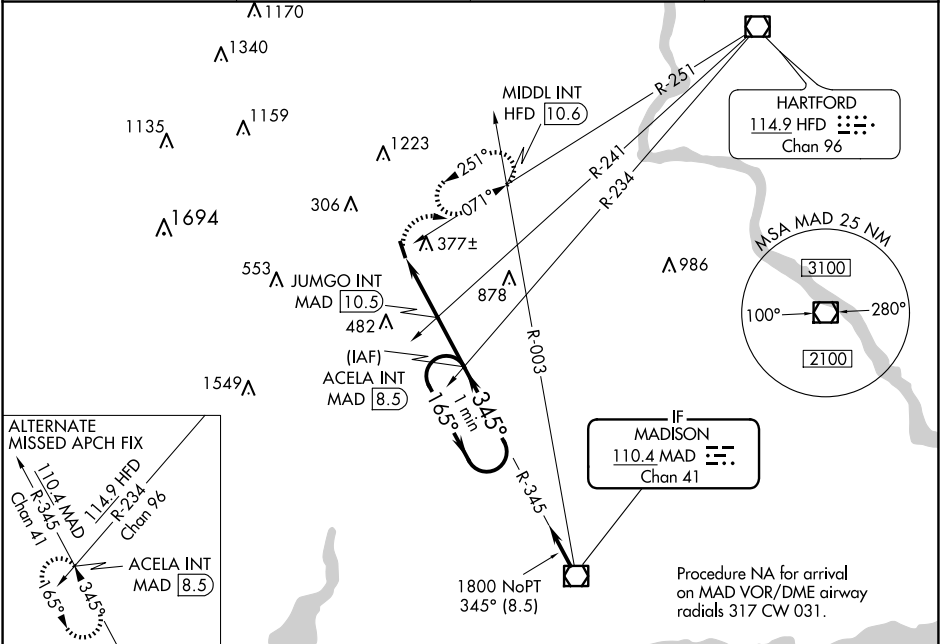
VOR/DME MAD	APP CRS	Rwy Idg	3100
110.4	345°	TDZE	99
Chan 41		Apt Elev	103

VOR RWY 36

MERIDEN MARKHAM MUNI (MMK)

<div> <div></div> <div>Rwy 36 helicopter visibility reduction below 1 SM NA. Procedure NA at night.</div> </div>	MISSED APPROACH: Climbing right turn to 2700 on HFD VOR/DME R-251 to MIDDLE INT/HFD 10.6 DME and hold, continue climb-in-hold to 2700.
--	--

ASOS 134.925	BRADLEY APP CON 127.8 269,325	CLNC DEL 120.65	UNICOM 123.05 (CTAF) 0
------------------------	---	---------------------------	---



<div>2700</div> <div>HFD R-251</div>	<div>MIDL INT</div>	<div><div><div>JUMGO INT MAD 10.5</div><div>ACELA INT MAD 8.5</div><div>One Minute Holding Pattern</div></div><div><div>165°</div><div>2100</div><div>1800</div><div>1060</div><div>345°</div><div>3.50° TCH 38</div></div><div><div>2.5 NM</div><div>2 NM</div></div></div>			
CATEGORY	A	B	C	D	
S-36	1060-1¼ 961 (1000-1¼)	1060-1½ 961 (1000-1½)	NA		
<div>C</div> CIRCLING	1060-1¼ 957 (1000-1¼)	1060-1½ 957 (1000-1½)	NA		
JUMGO FIX MINIMUMS (DUAL VOR RECEIVERS OR DME REQUIRED)					
S-36	880-1 781 (800-1)	880-1¼ 781 (800-1¼)	NA		
<div>C</div> CIRCLING	880-1 777 (800-1)	920-1¼ 817 (900-1¼)	NA		