

APP CRS
348°

Rwy Ldg
TDZE
24

Apt Elev
27

RNAV (GPS) Y RWY 35R

SACRAMENTO INTL (SMF)

RNP APCH-GPS.

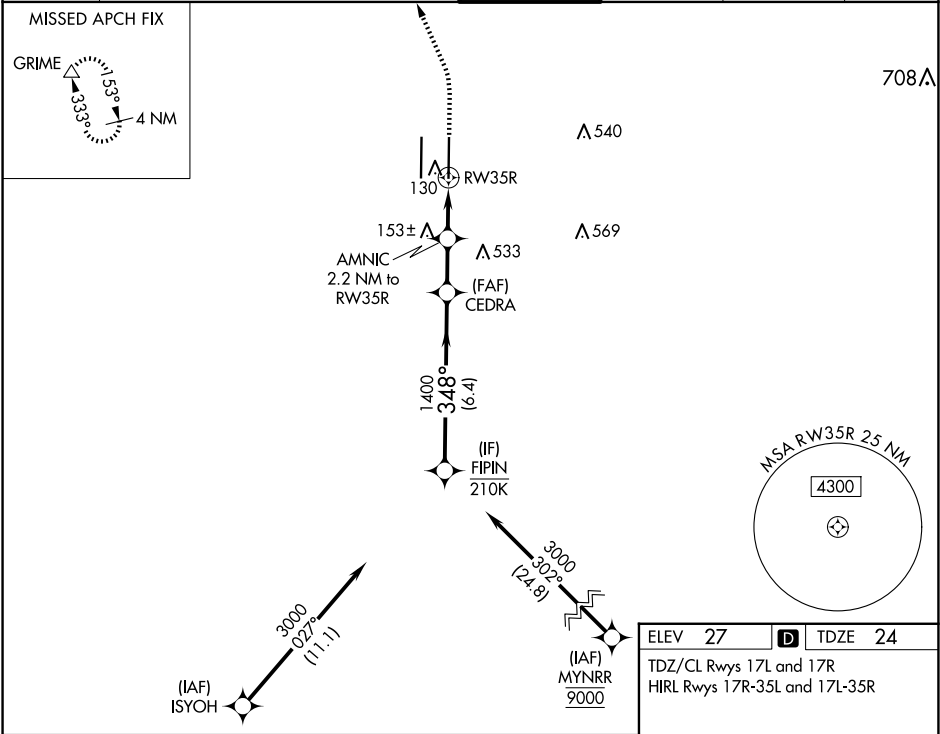
▼

⚠

Circling NA west of Rwy 17L-35R. Rwy 35R helicopter visibility reduction below ¾ SM NA. For uncompensated Baro-VNAV systems, LNAV/VNAV NA below -2°C or above 54°C.

MISSED APPROACH: Climb to 800 then climbing left turn to 2000 direct GRIME and hold.

D-ATIS 126.75	NORCAL APP CON 125.4 259.1 (W-NE) 125.25 257.9 (SW) 127.4 317.5 (E-SE)	CAPITOL TOWER 125.7 256.7	GND CON 121.7 256.7	CLNC DEL 121.1 256.7	CPDLC
-------------------------	--	-------------------------------------	-------------------------------	--------------------------------	-------



FIPIN

3000

GP 3.00° TCH 64

CEDRA

1400

AMNJC 2.2 NM to RW35R

780

800

2000

GRIME

3000

348°

1400

6.4 NM

1.9 NM

1.3 NM

0.9 NM

RW35R

CATEGORY	A	B	C	D
LNAV/VNAV DA		311/45	287 (300-¾)	
LNAV MDA		380/55	356 (400-1)	
CIRCLING	400-1 373 (400-1)	480-1 453 (500-1)	480-1½ 453 (500-1½)	840-2¾ 813 (900-2¾)

ELEV 27

D

TDZE 24

TDZ/CL Rwys 17L and 17R

HIRL Rwys 17R-35L and 17L-35R

17R

A

d

8598 X 150

35L

AS

P

17L

AS

d

8405 X 150

35R

P

TWR

348°