

APP CRS
348°

Rwy Ldg
TDZE
Apt Elev

8605
24
27

RNAV (RNP) Z RWY 35R
SACRAMENTO INTL (SMF)

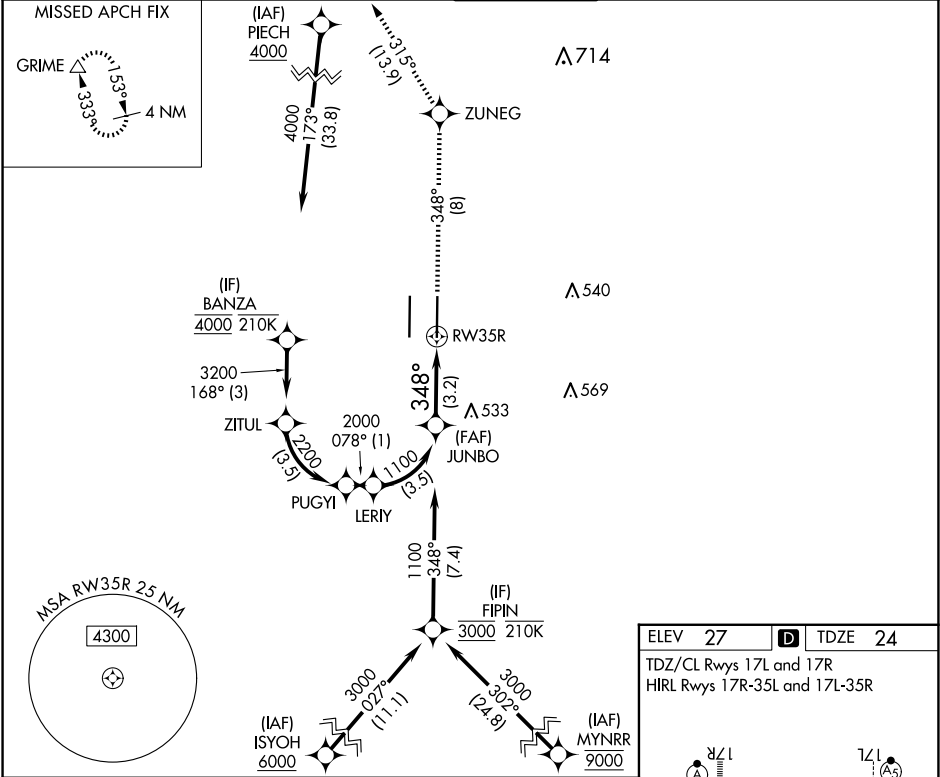
RNP AR APCH-GPS.

▼

For uncompensated Baro-VNAV systems, procedure NA below -2°C or above 54°C.

MISSED APPROACH: Climb to 2000 on track 348° to ZUNEG and on track 315° to GRIME and hold.

D-ATIS 126.75	NORCAL APP CON 125.4 259.1 (W-NE) 125.25 257.9 (SW) 127.4 317.5 (E-SE)	CAPITOL TOWER 125.7 256.7	GND CON 121.7 256.7	CLNC DEL 121.1 256.7	CPDLC
-------------------------	--	-------------------------------------	-------------------------------	--------------------------------	-------



JUNBO 1100

GP 3.00° TCH 64

348°

RW35R

See planview for multiple IF locations.

3.2 NM

2000

tr 348°

ZUNEG

tr 315°

GRIME

CATEGORY	A	B	C	D
RNP 0.10 DA	316/45 292 (300-7%)			
RNP 0.30 DA	384/55 360 (400-1)			

AUTHORIZATION REQUIRED

