

APP CRS
348°

Rwy Ldg
TDZE
Apt Elev
8598
24
27

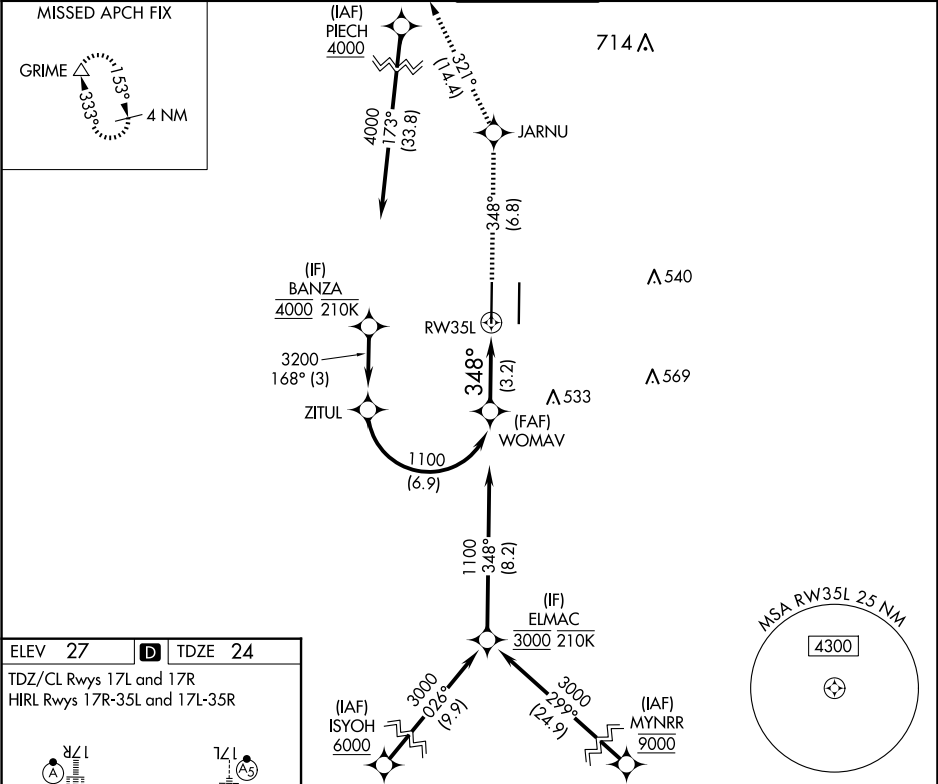
RNAV (RNP) Z RWY 35L
SACRAMENTO INTL (SMF')

RNP AR APCH-GPS.
▼ For uncompensated Baro-VNAV systems, procedure NA below -2°C or above 54°C. For inop ALS, increase RNP 0.12 all Cats visibility to RVR 4500; increase RNP 0.30 all Cats visibility to RVR 5500.

MALSR
AS

MISSED APPROACH: Climb to 2000 on track 348° to JARNU and track 321° to GRIME and hold.

D-ATIS 126.75	NORCAL APP CON 125.4 259.1 (W-NE) 125.25 257.9 (SW) 127.4 317.5 (E-SE)	CAPITOL TOWER 125.7 256.7	GND CON 121.7 256.7	CLNC DEL 121.1 256.7	CPDLC
-------------------------	---	-------------------------------------	-------------------------------	--------------------------------	-------



ELEV 27 D TDZE 24
TDZ/CL Rwy's 17L and 17R
HIRL Rwy's 17R-35L and 17L-35R

VGSI and RNAV glidepath not coincident (VGSI Angle 3.00/TCH 76).

GP 3.00°
TCH 59

3.2 NM

348°

2000 JARNU tr 348°

GRIME tr 321°

See planview for multiple IF locations.

CATEGORY	A	B	C	D
RNP 0.12 DA		318/24	294 (300-1/2)	
RNP 0.30 DA		382/30	358 (400-5/8)	

AUTHORIZATION REQUIRED

SW-2, 10 JUL 2025 to 07 AUG 2025

SW-2, 10 JUL 2025 to 07 AUG 2025