
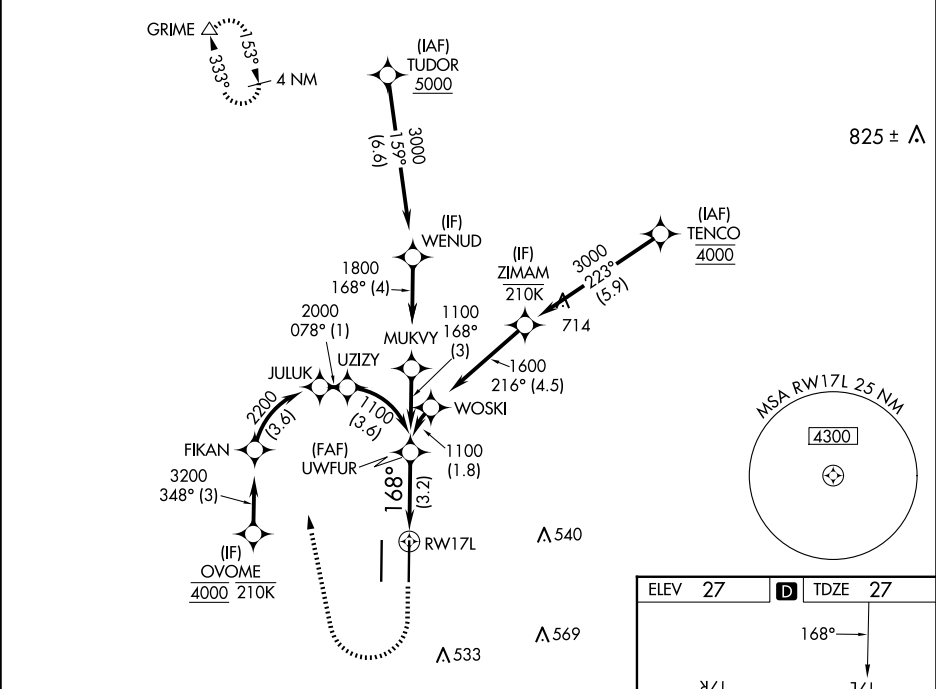



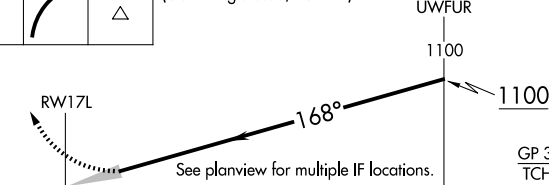
APP CRS	Rwy Ldg	8605
168°	TDZE	27
	Apt Elev	27

RNAV (RNP) Z RWY 17L

SACRAMENTO INTL (SMF)

RNP AR APCH-GPS.		<div>MALSR</div> <div></div>	MISSED APPROACH: Climb to 500 then right turn to 3000 direct GRIME and hold.			
▼ For uncompensated Baro-VNAV systems, procedure NA below -2°C or above 54°C. For inop ALS, increase RNP 0.12 all Cats visibility to RVR 4000; increase RNP 0.30 all Cats visibility to RVR 4500.			*Missed approach requires minimum climb of 290 feet per NM to 3000. #Missed approach requires minimum climb of 300 feet per NM to 3000.			
D-ATIS	NORCAL APP CON		CAPITOL TOWER	GND CON	CLNC DEL	CPDLC
126.75	125.4 259.1 (W-NE) 125.25 257.9 (SW) 127.4 317.5 (E-SE)		125.7 256.7	121.7 256.7	121.1 256.7	



500	3000	GRIME	VGSI and RNAV glidepath not coincident (VGSI Angle 3.00/TCH 64).			
↑		△				
			See planview for multiple IF locations.			
			3.2 NM			
CATEGORY	A		B	C	D	
RNP 0.12 DA#			277/24	250 (300-½)		
RNP 0.30 DA*			339/24	312 (400-½)		
AUTHORIZATION REQUIRED						

