

ILS or LOC RWY 35L  
SACRAMENTO INTL (SMF)

**MISSED APPROACH:** Climb to 500 then climbing left turn to 2000 on heading 320° and SAC VORTAC R-329 to GRIME INT/SAC 35.2 DME and hold.

MISSED APCH FIX

114.4 ILA

R-086  
Chan 91

GRIME

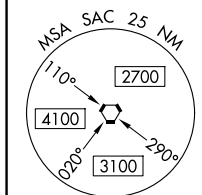
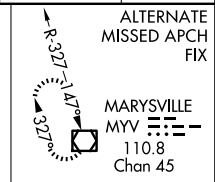
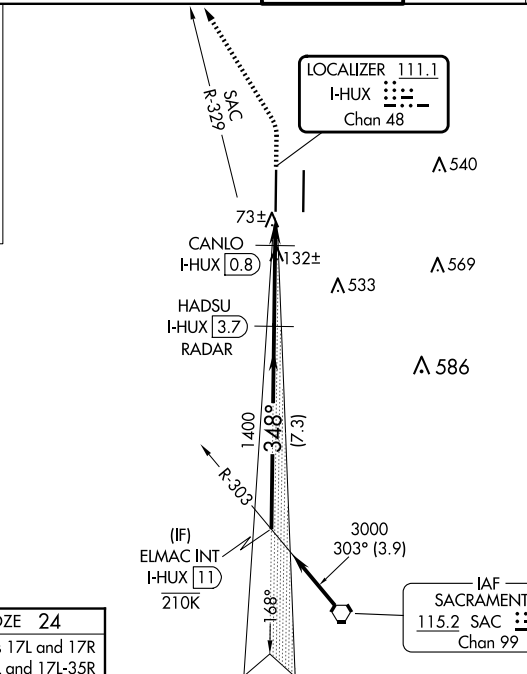
SAC 35.2

149°

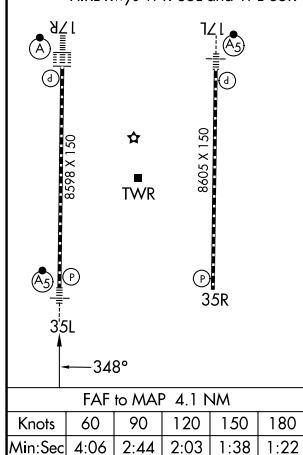
32.9

115.2 SAC

R-329  
Chan 99



|                              |          |         |
|------------------------------|----------|---------|
| ELEV 27                      | <b>D</b> | TDZE 24 |
| TDZ/CL Rwy 17L and 17R       |          |         |
| HIRL Rwy 17R-35L and 17L-35R |          |         |



Procedure NA for arrivals on SAC VORTAC airway radials 257 CW 329.

