

LOC/DME I-SMF

111.1

Chan **48**

APP CRS

168°

Rwy Ldg

8598

TDZE

25

Apt Elev

27

ILS or LOC RWY 17R

SACRAMENTO INTL (SMF)

Aircraft not GPS equipped - RADAR required for procedure entry.
DME or RADAR required. RNP APCH-GPS. From TENCO.

ALSIF-2

MISSED APPROACH: Climb to 500 then climbing right turn to 2000 on heading 350° and SAC VORTAC R-329 to GRIME INT/SAC 35.2 DME and hold.

Simultaneous approach authorized.
Circling NA east of Rwy 17R-35L.

D-ATIS

126.75

NORCAL APP CON

125.4 259.1 (W-NE) 125.25 257.9 (SW) 127.4 317.5 (E-SE)

CAPITOL TOWER

125.7 256.7

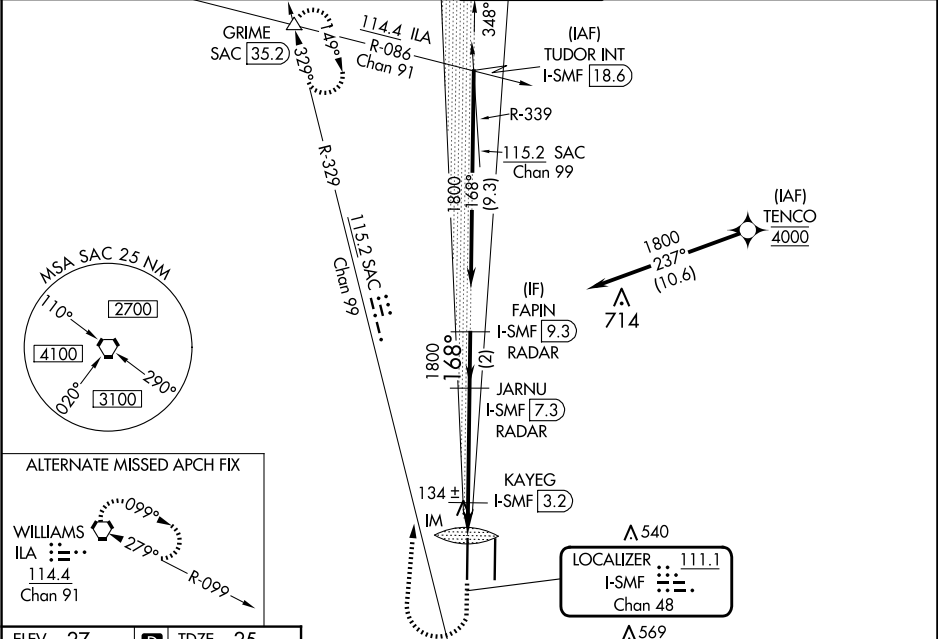
GND CON

121.7 256.7

CLNC DEL

121.1 256.7

CPDLC



ELEV **27**

D

TDZE **25**

500

2000

hdg 350°

SAC R-329

GRIME

VGSI and ILS glidepath not coincident
(VGSI Angle 3.00/TCH 72).

JARNU I-SMF 7.3 RADAR

FAPIN I-SMF 9.3 RADAR

KAYEG I-SMF 3.2

I-SMF 1.9

IM

480

1800

168°

GS 3.00° TCH 57

CATEGORY	A	B	C	D
S-ILS 17R	225/18		200 (200-½)	
S-LOC 17R	480/24	455 (500-½)	480/45	455 (500-¾)
CIRCLING	480-1	453 (500-1)	480-1½	580-2
KAYEG FIX MINIMUMS (DME REQUIRED)				
S-LOC 17R	400/24	375 (400-½)	400/35	375 (400-¾)
CIRCLING	440-1	480-1	480-1½	580-2
	413 (500-1)	453 (500-1)	453 (500-½)	553 (600-2)

TDZ/CL Rwy 17L and 17R

HIRL Rwy 17R-35L and 17L-35R

FAF to MAP 5.4 NM

Knots	60	90	120	150	180
Min:Sec	5:24	3:36	2:42	2:10	1:48

SACRAMENTO, CALIFORNIA

Amdt 16E 23FEB23

38°42'N-121°35'W

SACRAMENTO INTL (SMF)

ILS or LOC RWY 17R