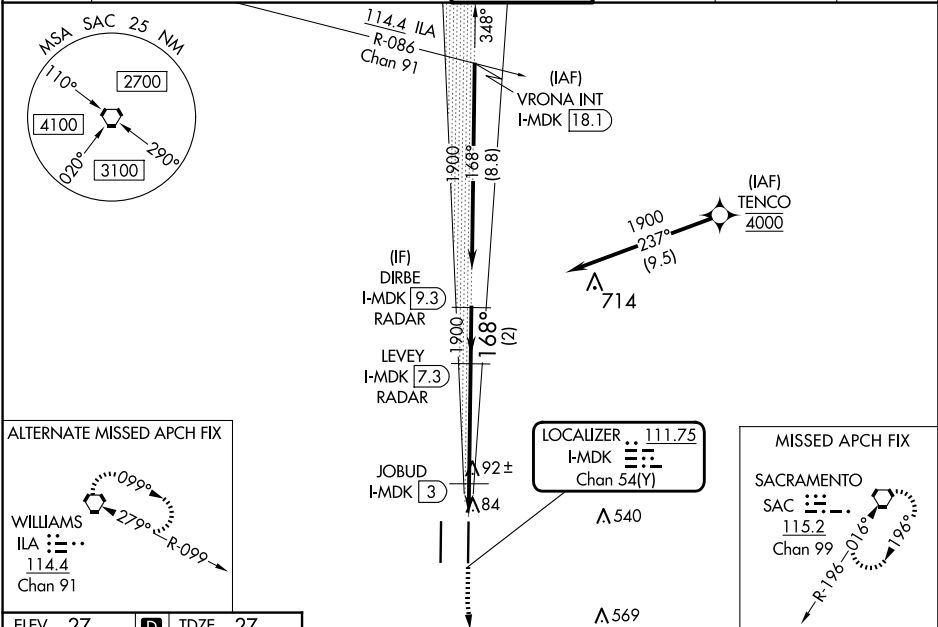


LOC/DME I-MDK 111.75 Chan 54 (Y)	APP CRS 168°	Rwy Ldg 8605 TDZE 27 Apt Elev 27
--	------------------------	---

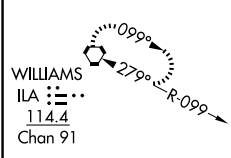
ILS or LOC RWY 17L
SACRAMENTO INTL(SMF)

Aircraft not GPS equipped - RADAR required for procedure entry. DME or RADAR required. RNP APCH-GPS. From TENCO.		MALSR 	MISSED APPROACH: Climb to 500 then climbing left turn to 3000 direct SAC VORTAC and hold.
Simultaneous approach authorized. Circling NA west of Rwy 17L-35R. For inop ALS, increase S-LOC 17L Cat C/D visibility to 1 3/4 SM and JOBUD fix minimums S-LOC 17L Cat C/D visibility to RVF 4500.			

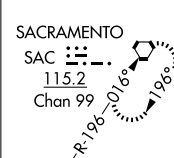
D-ATIS 126.75	NORCAL APP CON 125.4 259.1 (W-NE) 125.25 257.9 (SW) 127.4 317.5 (E-SE)	CAPITOL TOWER 125.7 256.7	GND CON 121.7 256.7	CLNC DEL 121.1 256.7	CPDLC
-------------------------	---	-------------------------------------	-------------------------------	--------------------------------	-------



ALTERNATE MISSED APCH FIX



MISSED APCH FIX



ELEV 27	D	TDZE 27	500 3000 SAC				Λ 569				
TDZ/CL Rwy 17L and 17R			JOBUD FIX MINIMUMS (DME REQUIRED)								
HIRL Rwy 17R-35L and 17L-35R											
FAF to MAP 5.7 NM											
Knots	60	90	120	150	180						
Min:Sec	5:42	3:48	2:51	2:17	1:54						

SW-2, 10 JUL 2025 to 07 AUG 2025

SW-2, 10 JUL 2025 to 07 AUG 2025