

LOC/DME I-SMF 111.1 Chan 48	APP CRS 168°	Rwy Ldg 8598 TDZE 25 Apt Elev 27	ILS RWY 17R (CAT II & III) SACRAMENTO INTL (SMF)	
---	------------------------	---	---	--

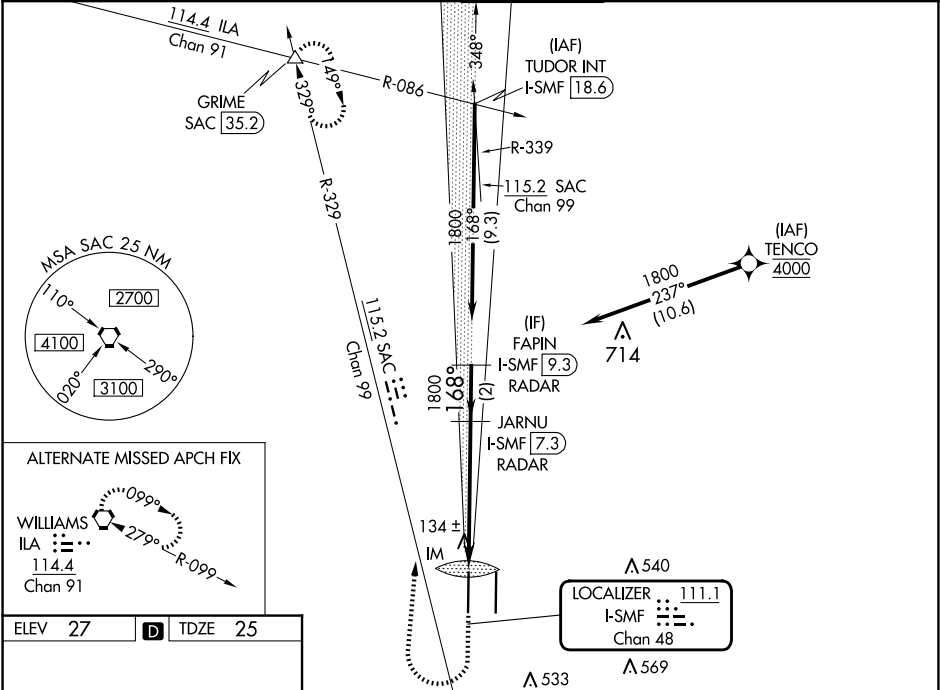
Aircraft not GPS equipped - RADAR required for procedure entry.
DME or RADAR required. RNP APCH-GPS. From TENCO.

Simultaneous approach authorized.

ALSF-2
A

MISSED APPROACH: Climb to 500 then climbing right turn to 2000 on heading 350° and SAC VORTAC R-329 to GRIME INT/SAC 35.2 DME and hold.

D-ATIS 126.75	NORCAL APP CON 125.4 259.1 (W-NE) 125.25 257.9 (SW) 127.4 317.5 (E-SE)	CAPTOL TOWER 125.7 256.7	GND CON 121.7 256.7	CLNC DEL 121.1 256.7	CPDLC
-------------------------	--	------------------------------------	-------------------------------	--------------------------------	-------



ELEV 27 TDZE 25

TDZ/CL Rwy 17L and 17R
HIRL Rwy 17R-35L and 17L-35R

500 2000 SAC R-329 GRIME

VGSI and ILS glidepath not coincident (VGSI Angle 3.00/TCH 72).

JARNU I-SMF 7.3 RADAR FAPIN I-SMF 9.3 RADAR

IM 122 1800 1800 GS 3.00° TCH 57

CATEGORY	A	B	C	D
S-ILS 17R	CAT II RA 103/12 100 DA 125			
S-ILS 17R	CAT III RVR 06			

CATEGORY II & III ILS - SPECIAL AIRCREW & AIRCRAFT CERTIFICATION REQUIRED