
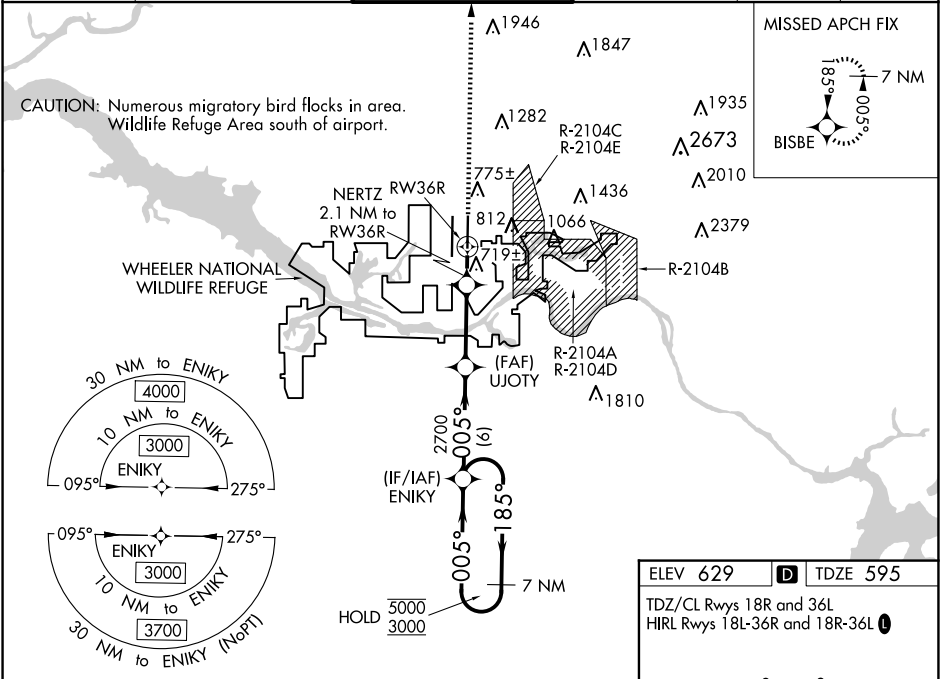


WAAS CH 86606 W36B	APP CRS 005°	Rwy Ldg TDZE 595 Apt Elev 629
--	------------------------	---

RNAV (GPS) RWY 36R

HUNTSVILLE INTL-CARL T JONES FLD (HSV)

RNP APCH - GPS.			<div>MALSR</div> <div></div>	MISSED APPROACH: Climb to 3000 direct BISBE and hold.	
<div><div><div><div><div><div>▼</div><div>▲</div></div><div>ASR</div></div><div><div><div><div><div>Circling NA for Cats C/D/E east of Rwy 18L-36R. For uncompensated Baro-VNAV systems, LNAV/VNAV NA below -9°C or above 54°C. Simultaneous approach authorized. LNAV procedure NA during simultaneous operations. Use of FD or AP required during simultaneous operations. For inop ALS increase LPV Cat E visibility to RVR 4000, LNAV/VNAV Cat E visibility to RVR 5000 and LNAV Cat E visibility to RVR 6000.</div></div></div></div></div></div></div></div>					
ATIS 121.25	HUNTSVILLE APP CON ★ 125.6 354.1	HUNTSVILLE TOWER ★ 127.6 (CTAF) 0 350.35	GND CON 121.9 269.525	CLNC DEL 120.35	UNICOM 122.95



7 NM Holding Pattern ENIKY		VGSI and RNAV glidepath not coincident (VGSI Angle 3.00/TCH 72).		3000	BISBE
5000 185° 3000 005°		UJOTY 2700		NERTZ 2.1 NM to RW36R	1 NM to RW36R
GP 3.00° TCH 55		2700		RW36R	
6 NM		4.4 NM		1.1 NM	
1 NM		1 NM			
CATEGORY	A	B	C	D	E
LPV DA	818/24		223 (200-½)		
LNAV/ VNAV DA	939/30		344 (400-⅝)		
LNAV MDA	980/24		385 (400-½)		980/35 385 (400-⅝)
CIRCLING	1160-1	531 (600-1)	1160-1½ 531 (600-1½)	1240-2 611 (700-2)	1260-2¼ 631 (700-2¼)

