

WAAS
CH **82606**
W36A

APP CRS
005°

Rwy Ldg **12600**
TDZE **616**
Apt Elev **629**

RNAV (GPS) RWY 36L

HUNTSVILLE INTL-CARL T JONES FLD (HSV)

RNP APCH-GPS.

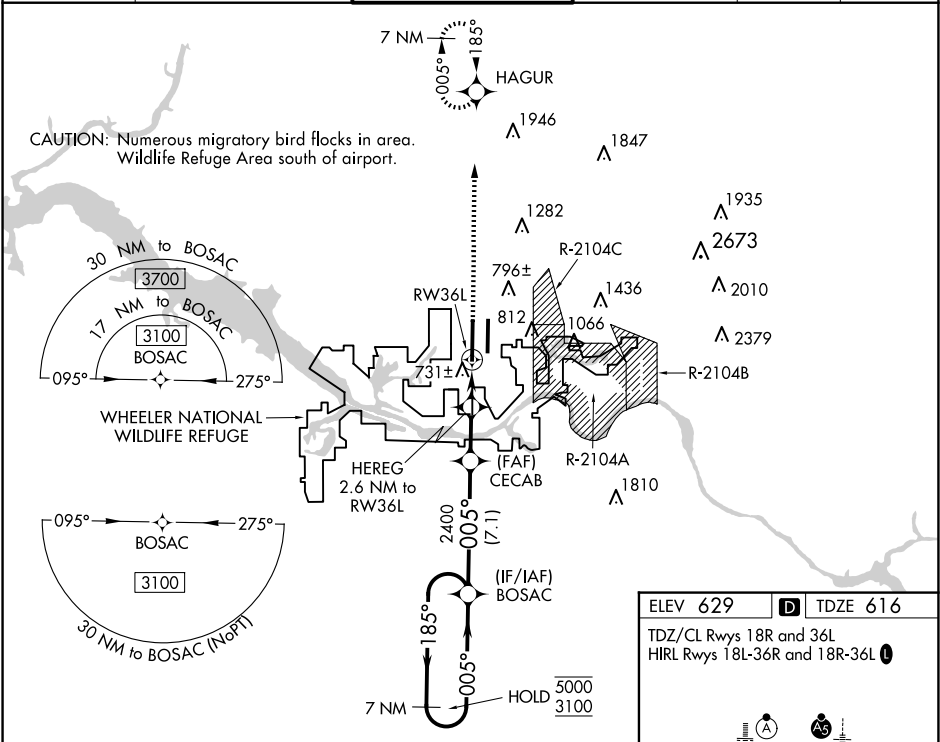
ASR

Circling NA for Cats C/D/E east of Rwy 18L-36R. Simultaneous approach authorized. LNAV procedure NA during simultaneous operations. Use of FD or AP required during simultaneous operations. For uncompensated Baro-VNAV systems, LNAV/VNAV NA below -8°C or above 54°C. For inop ALS, increase LPV Cat E visibility to RVR 4000, LNAV/VNAV all Cats visibility to RVR 4500, and LNAV Cat E visibility to RVR 6000.

MALSR

MISSED APPROACH:
Climb to 3000 direct HAGUR and hold.

ATIS 121.25	HUNTSVILLE APP CON ★ 125.6 354.1	HUNTSVILLE TOWER ★ 127.6 (CTAF) 350.35	GND CON 121.9 269.525	CLNC DEL 120.35	UNICOM 122.95
-----------------------	--	--	---------------------------------	---------------------------	-------------------------



ELEV 629 **D** TDZE 616

TDZ/CL Rwy 18R and 36L
HIRL Rwy 18L-36R and 18R-36L

7 NM Holding Pattern		BOSAC		CECAB		HEREG 2.6 NM to RW36L		3000 HAGUR	
5000 ← 185°		3100 → 005°		2400		1480		RW36L	
GP 3.00° TCH 53		7.1 NM		2.9 NM		1.5 NM		1.1 NM	
CATEGORY	A	B	C	D	E				
LPV DA	816/18 200 (200-½)								
LNAV/VNAV DA	892/24 276 (300-½)								
LNAV MDA	1000/24	384 (400-½)	1000/35			384 (400-¾)			
CIRCLING	1160-1	531 (600-1)	1160-1½	1240-2	1260-2¼				
			531 (600-1½)	611 (700-2)	631 (700-2¼)				