

LOC/DME I-JJC	APP CRS	Rwy Ldg	9801
109.55	005°	TDZE	595
Chan 32 (Y)		Apt Elev	629

ILS or LOC RWY 36R

HUNTSVILLE INTL-CARL T JONES FLD (HSV)

RADAR required for procedure entry. DME or RADAR required.

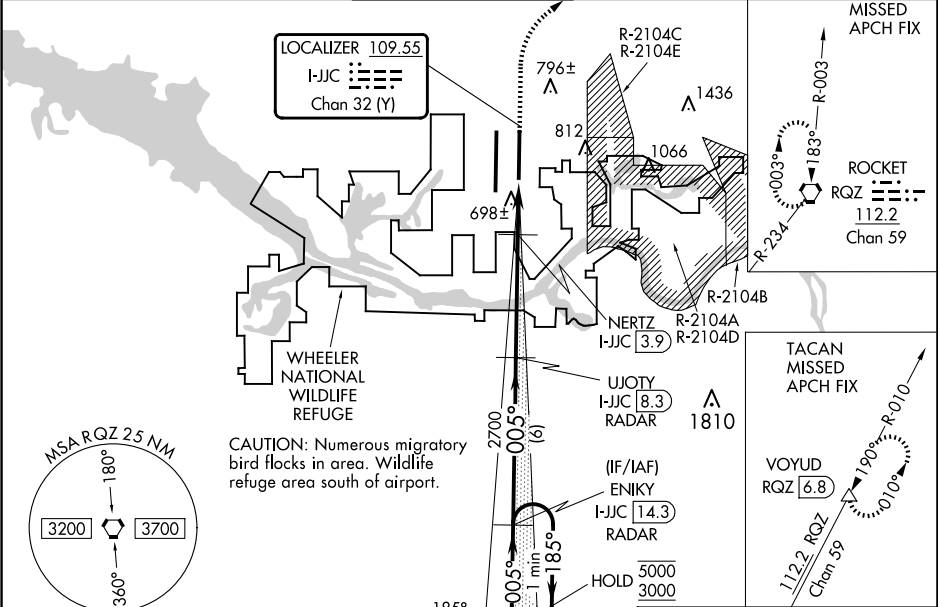
ASR

Simultaneous approach authorized. For inop ALS, increase S-ILS 36R Cat E visibility to RVR 4000 and S-LOC 36R Cat C/D/E visibility to 1½ SM; NERTZ Fix minimums: increase S-LOC 36R Cat E visibility to RVR 6000. Circling NA for Cat C/D/E east of Rwy 18L-36R.

MALSR

MISSED APPROACH: Climb to 4000 on heading 005° to intercept RQZ R-234 and right turn to RQZ VORTAC and hold, continue climb-in-hold to 4000. (TACAN aircraft continue climb to 5000 on RQZ VORTAC R-010 to VOYUD/RQZ 6.8 DME and hold north, left turn, 190° inbound, continue climb-in-hold to 5000).

ATIS	HUNTSVILLE APP CON ★	HUNTSVILLE TOWER ★	GND CON	CLNC DEL	UNICOM
121.25	125.6 354.1	127.6 (CTAF) 350.35	121.9 269.525	120.35	122.95



One Minute Holding Pattern		ENIKY I-JJC 14.3 RADAR	UJOTY I-JJC 8.3 RADAR	4000	RQZ R-234	RQZ
5000 ← 185°		005° →	005°	hdg 005°		
3000		2700	1260			
GS 3.00° TCH 55		VGSI and ILS glidepath not coincident (VGSI Angle 3.00/TCH 72).				
		6 NM	4.4 NM	1.1 NM	1 NM	
CATEGORY	A	B	C	D	E	
S-ILS 36R	818/24 223 (200-½)					
S-LOC 36R	1260/24 665 (700-½)		1260-1½ 665 (700-1½)			
CIRCLING	1260-1 631 (700-1)	1260-1¾ 631 (700-1¾)	1260-2 631 (700-2)	1260-2¼ 631 (700-2¼)		
NERTZ FIX MINIMUMS						
S-LOC 36R	980/24 385 (400-½)		980/35 385 (400-¾)			
CIRCLING	1160-1 531 (600-1)	1160-1½ 531 (600-½)	1240-2 611 (700-2)	1260-2¼ 631 (700-2¼)		
FAF to MAP 6.5 NM						
		Knots	60	90	120	150 180
		Min:Sec	6:30	4:20	3:15	2:36 2:10