

LOC/DME I-ELL

**108.5**

Chan **22**

APP CRS

**005°**

Rwy Ldg

**12600**

TDZE

**616**

Apt Elev

**629**

ILS or LOC RWY 36L

HUNTSVILLE INTL-CARL T JONES FLD (HSV)

DME required. RADAR required for procedure entry.

⚠

ASR

Circling NA for Cats C/D/E east of Rwy 18L-36R. Simultaneous approach authorized. For inop ALS, increase S-ILS 36L Cat E visibility to RVR 4000, S-LOC 36L Cat C/D/E visibility to RVR 5500. DME from RQZ VORTAC. DME use requires simultaneous reception of I-ELL and RQZ DME.

MALSR

⚠

A5

⚠

A5

MISSED APPROACH: Climb to 1100 then climbing left turn to 3000 on heading 350° and RQZ R-261 to TANNE/RQZ 17.6 DME and hold.

ATIS

**121.25**

HUNTSVILLE APP CON ★

**125.6 354.1**

HUNTSVILLE TOWER ★

**127.6 (CTAF) 0 350.35**

GND CON

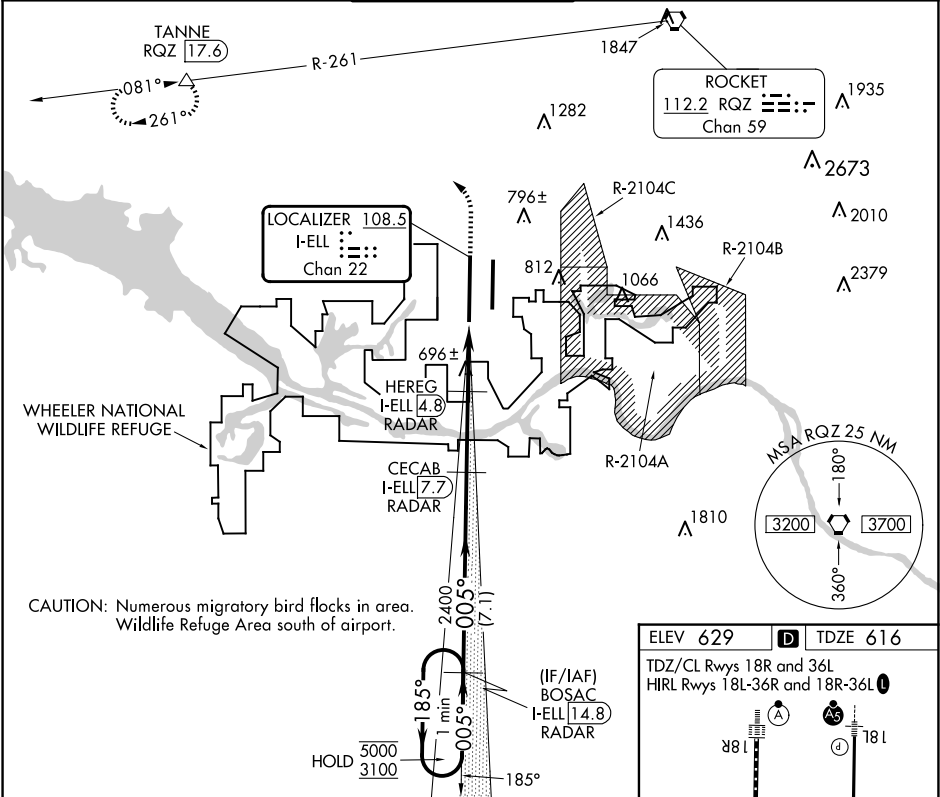
**121.9 269.525**

CLNC DEL

**120.35**

UNICOM

**122.95**



One Minute Holding Pattern

BOSAC I-ELL 14.8 RADAR

CECAB I-ELL 7.7 RADAR

HEREG I-ELL 4.8 RADAR

5000

3100

185°

005°

005°

2400

1480

7.1 NM

2.9 NM

1.6 NM

0.9 NM

GS 3.00°

TCH 53

1100

3000

hdg 350°

RQZ R-261

TANNE

181

36L

005°

CATEGORY	A	B	C	D	E
S-ILS 36L	816/18 200 (200-½)				
S-LOC 36L	960/24	344 (400-½)	960/30	344 (400-¾)	
CIRCLING	1160-1	531 (600-1)	1160-1½ 531 (600-½)	1240-2 611 (700-2)	1260-2½ 631 (700-2½)

ELEV 629

TDZE 616

TDZ/CL Rws 18R and 36L

HIRL Rws 18L-36R and 18R-36L

FAF to MAP 5.5 NM

Knots	60	90	120	150	180
Min:Sec	6:42	4:28	3:21	2:41	2:14