

APP CRS  
276°

Rwy Idg  
TDZE  
Apt Elev

4298  
813  
818

RNAV (GPS) RWY 28

IONIA COUNTY (Y70)

RNP APCH - GPS.

⚠

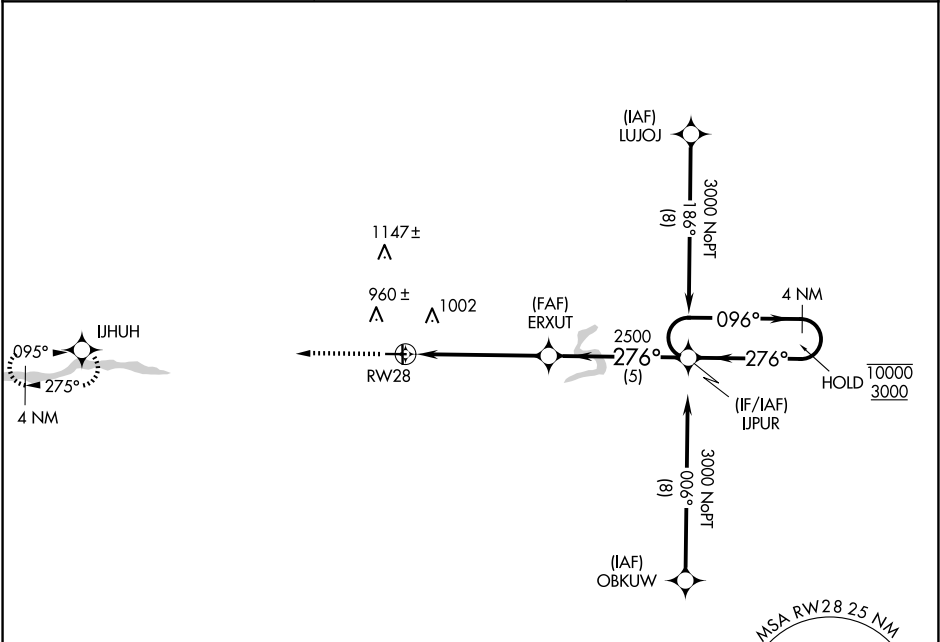
Circling NA to Rwy 18 and 36. Rwy 28 helicopter visibility reduction below ¾ SM NA.

MISSED APPROACH: Climb to 3000 direct IJHUH and hold.

AWOS-3  
118.9

GREAT LAKES APP CON ★  
118.65 226.4

UNICOM  
122.8 (CTAF) 0



ELEV 818 TDZE 813

Diagram of the runway and taxiway layout. RWY 28 is 4298 x 75 feet. RWY 36 is 4261 x 340 feet. Taxiway dimensions are 81, 4261, 340, and 36 feet. The diagram also shows the 276° heading and the 0.3% UP slope.

1953

3000 IJHUH

VGSI and descent angles not coincident (VGSI Angle 3.00/TCH 22).

4 NM Holding Pattern

1.3 NM to RWY 28

ERXUT

2500

096° 276°

10000 3000

1.3 3.8 NM 5 NM

CATEGORY	A	B	C	D
LNAV MDA	1240-1	427 (500-1)	1240-1¼ 427 (500-1¼)	NA
CIRCLING	1320-1	502 (600-1)	1340-1½ 522 (600-1½)	NA

REIL Rwy 28 0  
MIRL Rwy 10-28 0