

WAAS CH 42544 W10A	APP CRS 096°	Rwy Idg TDZE 814 Apt Elev 818
--	------------------------	---

RNAV (GPS) RWY 10
IONIA COUNTY (Y70)

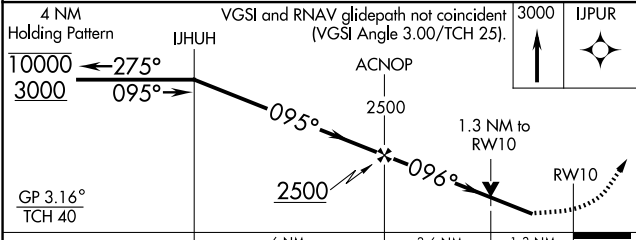
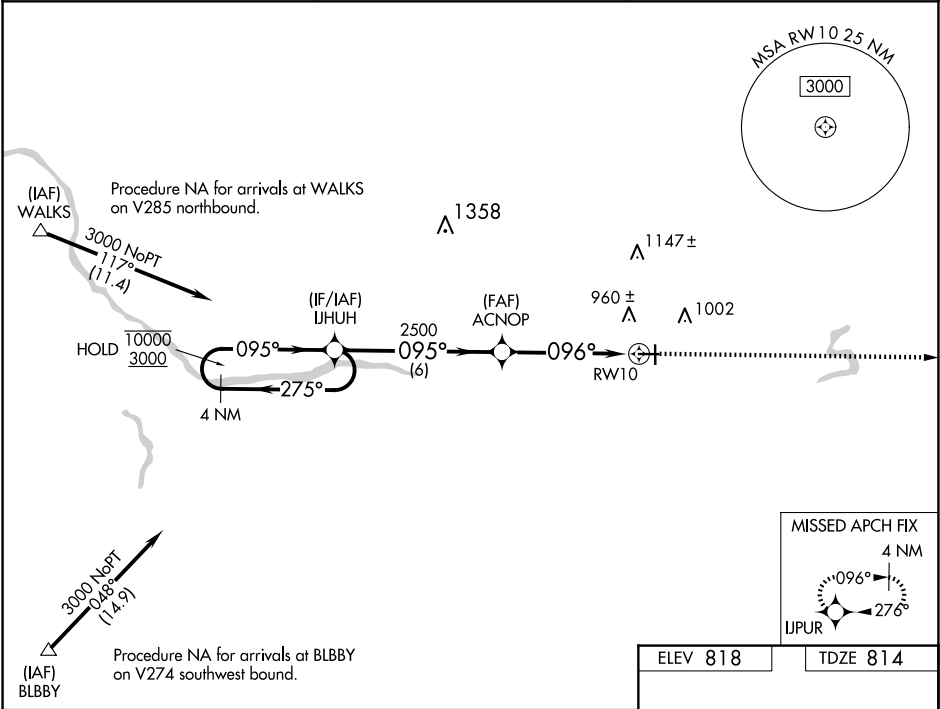
RNP APCH - GPS.

⚠

Circling NA to Rws 18 and 36. Rwy 10 helicopter visibility reduction below ¾ SM NA.
For uncompensated Baro-VNAV systems, LNAV/VNAV NA below -16°C or above 54°C.

MISSED APPROACH: Climb to 3000 direct IJPUR and hold.

AWOS-3 118.9	GREAT LAKES APP CON★ 118.65 226.4	UNICOM 122.8 (CTAF) 0
------------------------	---	---------------------------------



CATEGORY	A	B	C	D
LPV DA	1064-¾ 250 (300-¾)			NA
LNAV/VNAV DA	1064-¾ 250 (300-¾)			NA
LNAV MDA	1260-1	446 (500-1)	1260-1⅜ 446 (500-1⅜)	NA
CIRCLING	1320-1	502 (600-1)	1340-1½ 522 (600-1½)	NA

