

SNDRS THREE DEPARTURE (RNAV)

LIVINGSTON COUNTY SPENCER J HARDY (OZW)
AL-5485 (FAA) HOWELL, MICHIGAN

DETROIT DEP CON	
132.35	284.0
AWOS-3	
118.875	
CLNC DEL	
121.725	
CTAF	
123.0	

**TOP ALTITUDE:
ASSIGNED BY ATC**

JAV-1 DME/DME/IRU or GPS.	
ADAR required.	

DEPARTURE ROUTE DESCRIPTION

TAKEOFF RUNWAY 13: Climb on heading 132° or as assigned by ATC,
thence...
TAKEOFF RUNWAY 31: Climb on heading 312° or as assigned by ATC,
thence...

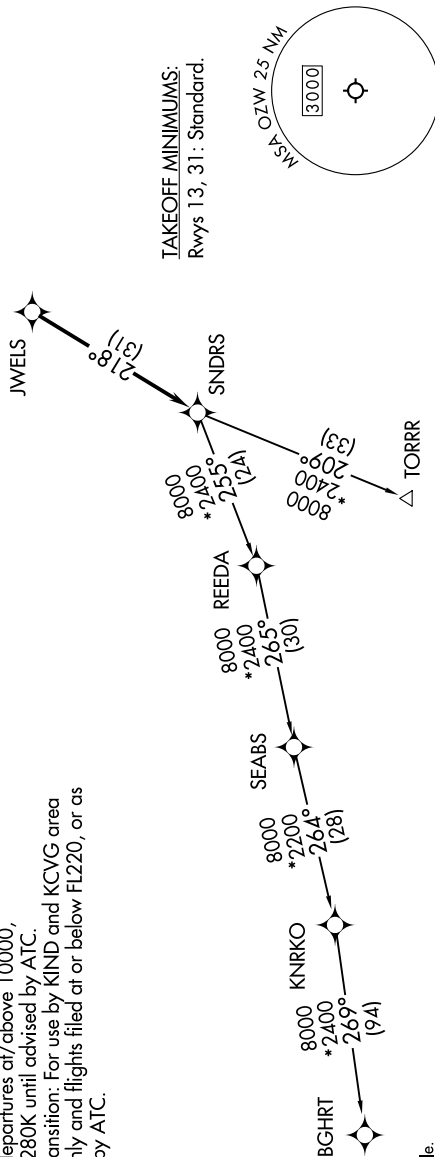
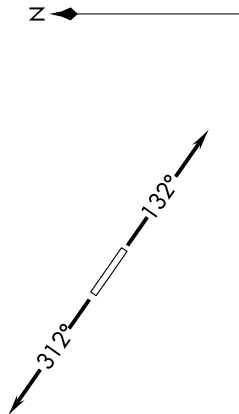
.....for RADAR vectors to JWELS, then on track 218° to SNDRS, then on (transition). Maintain ATC assigned altitude, expect filed altitude 10 minutes after departure.

BGHRT TRANSITION (SNDRS3.BGHRT):
TORRR TRANSITION (SNDRS3.TORRR):

NOTE: Turbojet departures at/above 10000, maintain 280K until advised by ATC.

NOTE: TORRR Transition: For use by KIND and KCVG area arrivals only and flights filed at or below FL220, or as assigned by ATC.

NOTE: Chart not to scale.



SNDRS THREE DEPARTURE (RNAV)
(SNDRS3.SNDRS) 16MAY24

HOWELL, MICHIGAN
LIVINGSTON COUNTY SPENCER J HARDY (OZW)

EC-1, 10 JUL 2025 to 07 AUG 2025