

EC-1, 10 JUL 2025 to 07 AUG 2025

WAAS
CH **99722**
W31A

APP CRS
312°

Rwy Idg **5002**
TDZE **943**
Apt Elev **962**

RNAV (GPS) RWY 31

LIVINGSTON COUNTY SPENCER J HARDY (OZW)

RNP APCH.

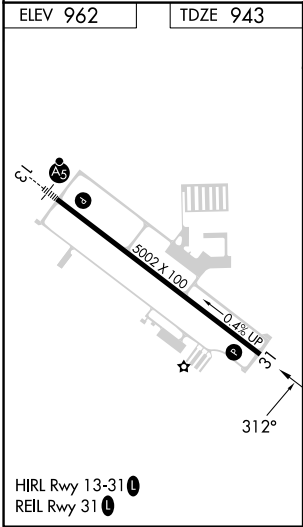
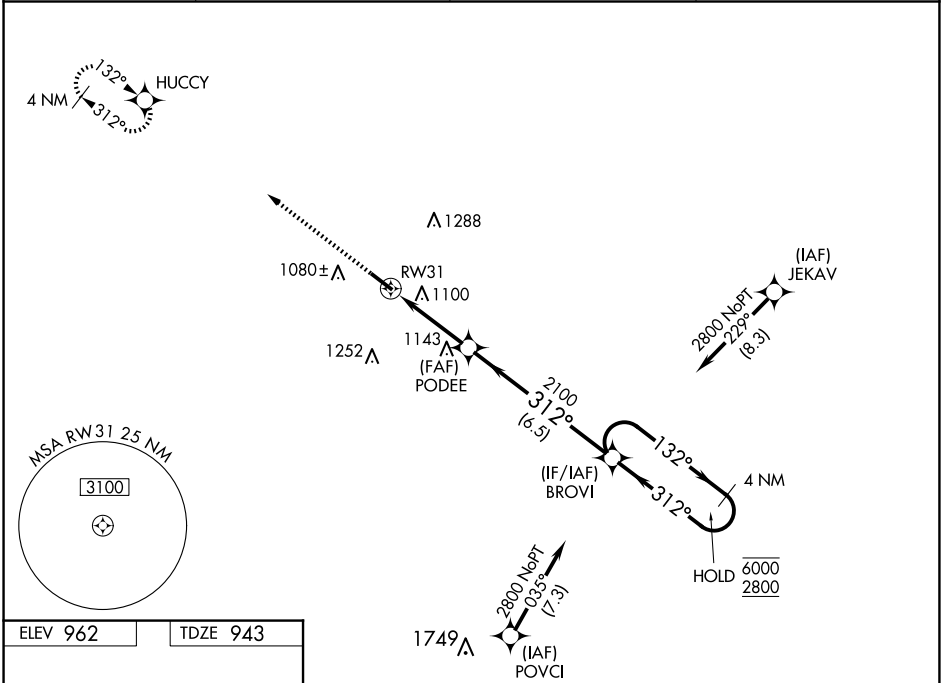
▼

▲

For uncompensated Baro-VNAV systems, LNAV/VNAV NA below -16°C or above 54°C.

MISSED APPROACH:
Climb to 3000 direct
HUCCY and hold.

AWOS-3 118.875	DETROIT APP CON 132.35 284.0	CLNC DEL 121.725 (GCO)	UNICOM 123.0 (CTAF) 0
--------------------------	--	----------------------------------	---------------------------------



3000

↑

HUCCY

✱

VGSI and RNAV glidepath not coincident (VGSI Angle 3.00/TCH 30).

4 NM Holding Pattern

PODEE

BROVI

132°

312°

6000

2800

GP 3.00° TCH 40

* LNAV only.

* 1.3 NM to RW31

1.3

2.2 NM

6.5 NM

CATEGORY	A	B	C	D
LPV DA	1143- ³ / ₄ 200 (200- ³ / ₄)			
LNAV/VNAV DA	1410-1 ⁵ / ₈ 467 (500-1 ⁵ / ₈)			
LNAV MDA	1400-1	457 (500-1)	1400-1 ³ / ₈	457 (500-1 ³ / ₈)
CIRCLING	1400-1 438 (500-1)	1420-1 458 (500-1)	1600-1 ³ / ₄ 638 (700-1 ³ / ₄)	1600-2 638 (700-2)

EC-1, 10 JUL 2025 to 07 AUG 2025