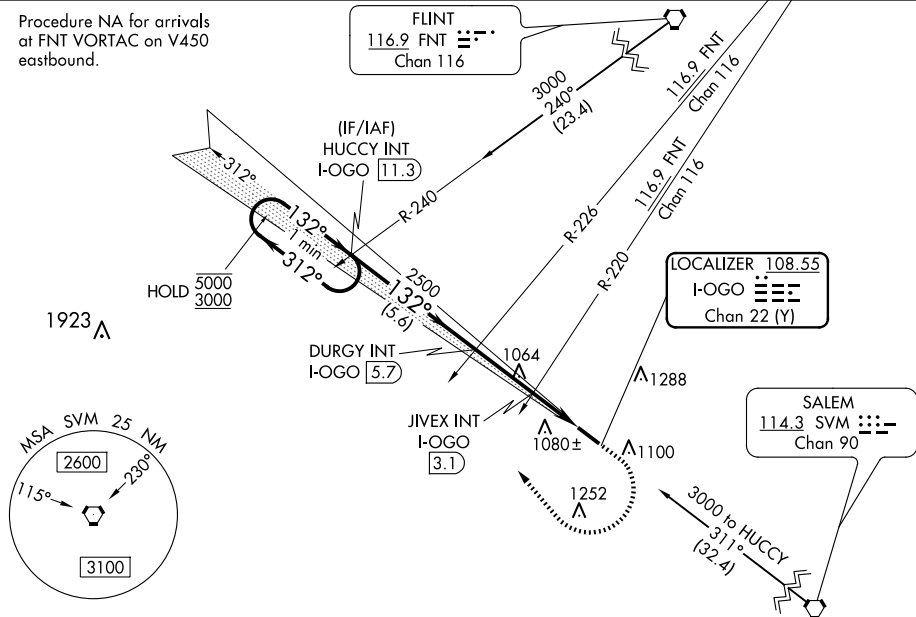


ILS or LOC RWY 13
LIVINGSTON COUNTY SPENCER J HARDY (OZW)

MISSED APPROACH: Climb to 1600 then climbing right turn to 3000 heading 356° and I-OGO NW course to HUCCY INT/ I-OGO 11.3 DME and hold.

Procedure NA for arrivals
at FNT VORTAC on V450
eastbound.



One Minute Holding Pattern

HUCCY INT I-OGO 11.3

DURGY INT I-OGO 5.7

JIVEX INT I-OGO 3.1

HUCCY INT

5000 ← 312°

3000 → 132°

GS 3.00° TCH 48

2500

2500

1540

5.6 NM

2.6 NM

1.1

1.0

1600

3000

hdg 356° I-OGO NW crs

*LOC only

CATEGORY	A	B	C	D
S-ILS 13	1162-½ 200 (200-½)			
S-LOC 13	1540-½ 578 (600-½)	1540-1¼ 578 (600-1¼)		
CIRCLING	1540-1 578 (600-1)	1600-1¾ 638 (700-1¾)		1600-2 638 (700-2)

JIVEC FIX MINIMUMS (DUAL VOR RECEIVERS OR DME REQUIRED)

S-LOC 13	1320-½ 358 (400-½)	1320-5/8 358 (400-5/8)
CIRCLING	1400-1 438 (500-1)	1420-1 458 (500-1)
	1600-1¾ 638 (700-1¾)	1600-2 638 (700-2)

ELEV 962

TDZE 962

132°

5002 X 100

0.48 UP

5

HIRL Rwy 13-31

REIL Rwy 31

FAF to MAP 4.7 NM

Knots	60	90	120	150	180
Min:Sec	4:42	3:08	2:21	1:53	1:34