

WAAS CH 53418	APP CRS 197°	Rwy Idg TDZE 373
W20A		Apt Elev 373

RNAV (GPS) RWY 20

PERRYVILLE RGNL (PCD)

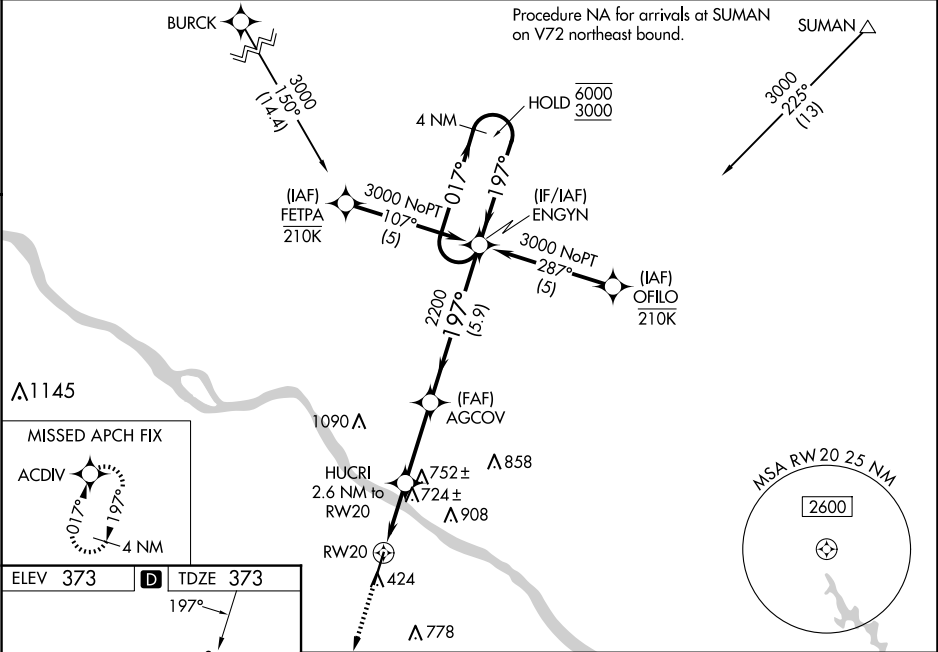
RNP APCH - GPS.

⚠

For uncompensated Baro-VNAV systems, LNAV/VNAV NA below -15°C or above 54°C. Baro-VNAV and VDP NA when using CGI altimeter setting. Rwy 20 helicopter visibility reduction below ¾ SM NA. When local altimeter setting not received, use CGI altimeter setting and increase LPV DA to 723 feet; increase LNAV/VNAV DA to 746 feet; increase all MDAs 100 feet and LNAV visibility Cat C/D ¼ SM, and Circling visibility Cat C ¼ SM.

MISSED APPROACH: Climb to 3000 direct ACDIV and hold.

AWOS-3PT 118.95	KANSAS CITY CENTER 127.475 346.275	UNICOM 122.8 (CTAF) 0
---------------------------	--	---------------------------------



3000

↑

ACDIV

☼

HUCRI

2.6 NM to RW20

AGCOV

2200

ENGYN

4 NM Holding Pattern

1.8 NM to RW20

1.8

0.8

3 NM

5.9 NM

1240

197°

2200

017°

197°

6000

3000

GP 3.00° TCH 40

CATEGORY	A	B	C	D
LPV DA	623-1 250 (300-1)			
LNAV/VNAV DA	646-1 273 (300-1)			
LNAV MDA	980-1 607 (700-1)		980-1¾ 607 (700-1¾)	
CIRCLING	980-1 607 (700-1)	1000-1 627 (700-1)	1260-2¾ 887 (900-2¾)	1260-3 887 (900-3)