

WAAS CH 57913 W33A	APP CRS 330°	Rwy Ldg 5701 TDZE 831 Apt Elev 833
--	------------------------	---

RNAV (GPS) RWY 33

LAWRENCE RGNL (LWC)

⚠ For uncompensated Baro-VNAV systems, LNAV/VNAV NA below -16°C (4°F) or above 54°C (130°F). DME/DME RNP-0.3 NA. When local altimeter setting not received, use Philip Billard Muni altimeter setting and increase LPV DA to 1083 feet, increase LNAV/VNAV DA to 1252 feet and all visibilities ¼ SM; increase all MDAs 60 feet and visibility Cat C ¼ SM. Baro-VNAV and VDP NA when using Philip Billard Muni altimeter setting.

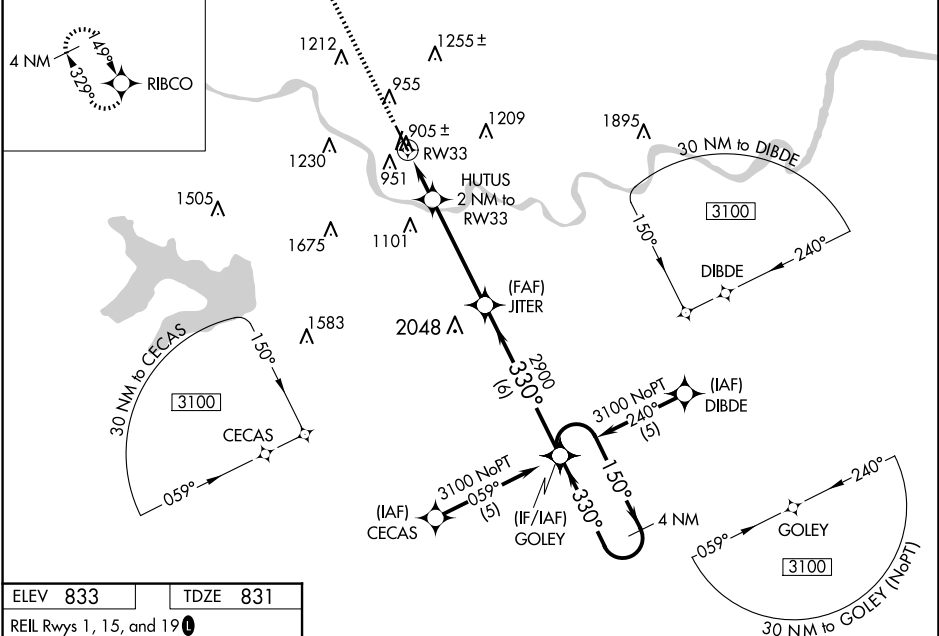
MALSR



MISSED APPROACH:
Climb to 2700 direct
RIBCO and hold.

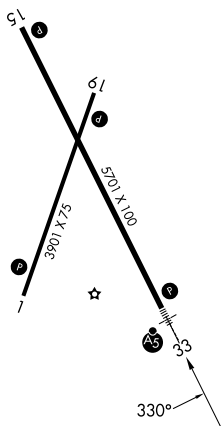
ASOS 121,225	KANSAS CITY CENTER 123.8 343.7	CLNC DEL 121,825	UNICOM 123.0 (CTAF) 0
------------------------	--	----------------------------	---------------------------------

MISSED APCH FIX

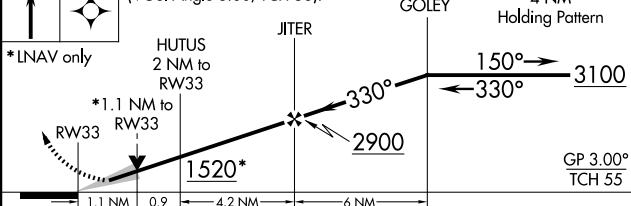


ELEV 833

TDZE 831

REIL Rwy 1, 15, and 19 **L**MIRL Rwy 1-19 and 15-33 **L**

2700	RIBCO	VGSI and RNAV glidepath not coincident (VGSI Angle 3.00/TCH 56).
------	-------	--



CATEGORY	A	B	C	D
LPV DA	1031- $\frac{1}{2}$ 200 (200- $\frac{1}{2}$)			NA
LNAV/ VNAV DA	1200- $\frac{3}{4}$ 369 (400- $\frac{3}{4}$)			NA
LNAV MDA	1220- $\frac{1}{2}$ 389 (400- $\frac{1}{2}$)			NA
CIRCLING	1420-1 587 (600-1)	1480-1 647 (700-1)	1620-2 $\frac{1}{4}$ 787 (800-2 $\frac{1}{4}$)	NA