

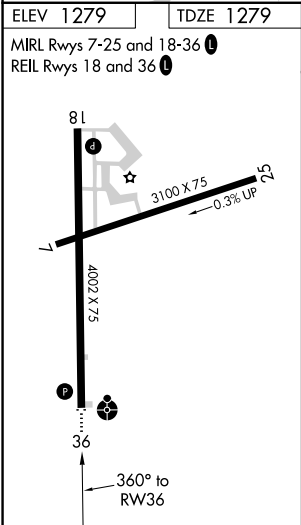
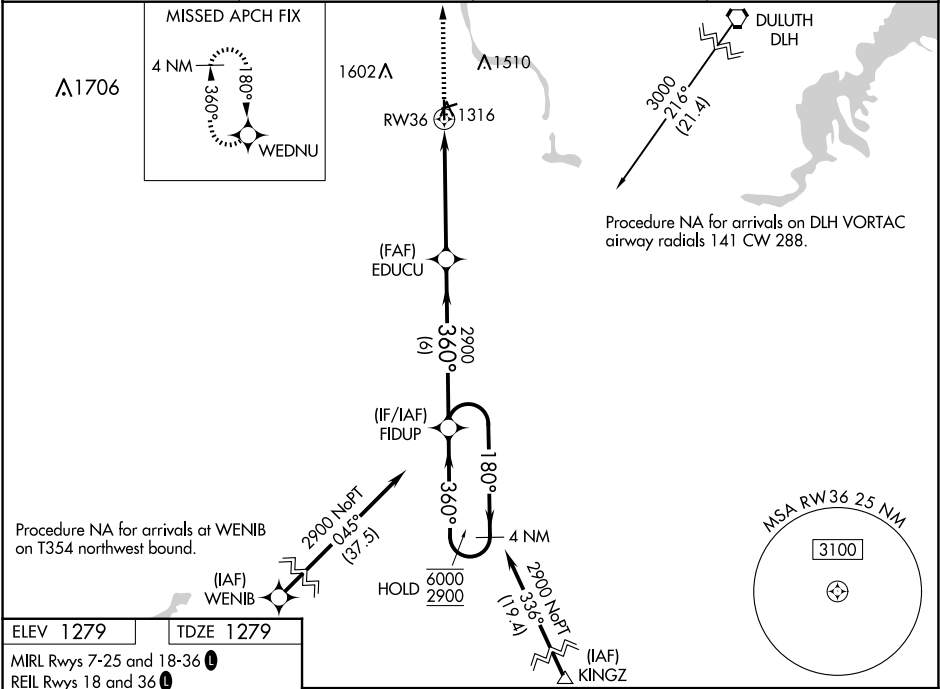
WAAS CH 82429 W36A	APP CRS 360°	Rwy Idg TDZE Apt Elev	4002 1279 1279
--	------------------------	-----------------------------	---

RNAV (GPS) RWY 36

CLOQUET/CARLTON COUNTY (CQ)Q

RNP APCH.	ODALS	MISSED APPROACH: Climb to 3000 direct WEDNU and hold.
<div><div></div><div>For uncompensated Baro-VNAV systems, LNAV/VNAV NA below -17°C or above 54°C. Inop table does not apply. Straight-in Rwy 7, 25 NA at night, Circling Rwy 7, 25 NA at night.</div></div>	<div><div></div></div>	

AWOS-3 118.525	DULUTH APP CON 125.45 233.7	CLNC DEL 122.15	UNICOM 122.8 (CTAF)
--------------------------	---------------------------------------	---------------------------	-------------------------------



ELEV 1279	TDZE 1279	MIRL Rwy 7-25 and 18-36 REIL Rwy 18 and 36			
WEDNU		VGSI and RNAV glidepath not coincident (VGSI Angle 3.00/TCH 30).			
EDUCU		FIDUP			
RW36		4 NM Holding Pattern			
1.2 NM to RW36		360° 180° 6000 2900			
1.2		3.8 NM 6 NM			
CATEGORY		A B C D			
LPV DA		1529-1 250 (300-1) NA			
LNAV/VNAV DA		1580-1 301 (400-1) NA			
LNAV MDA		1680-1 401 (500-1) 1680-1 401 (500-1 1/8) NA			
CIRCLING		1740-1 461 (500-1) 1860-1 581 (600-1) 1920-1 641 (700-1 3/4) NA			

NC-1, 10 JUL 2025 to 07 AUG 2025

NC-1, 10 JUL 2025 to 07 AUG 2025