

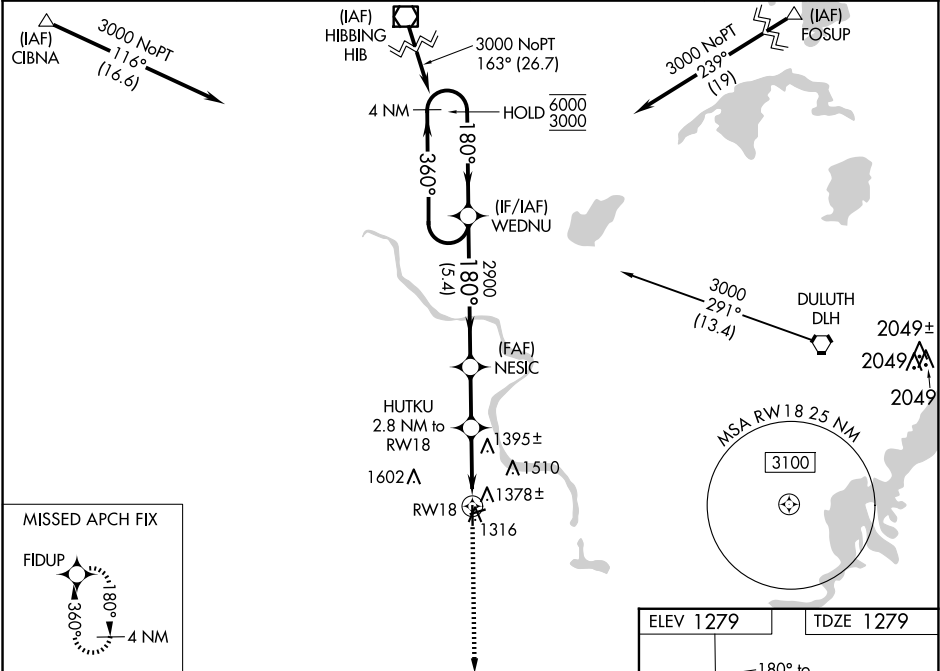
WAAS CH <b>97529</b> <b>W18A</b>	APP CRS <b>180°</b>	Rwy Idg TDZE Apt Elev	<b>4002</b> <b>1279</b> <b>1279</b>
--	------------------------	-----------------------------	---

RNAV (GPS) RWY 18

CLOQUET/CARLTON COUNTY (CQ)

RNP APCH.	MISSED APPROACH: Climb to 2900 direct FIDUP and hold.
Rwy 18 helicopter visibility reduction below ¾ SM NA. For uncompensated Baro-VNAV systems, LNAV/VNAV NA below -17°C or above 54°C. Circling Rwy 7, 25 NA at night.	

AWOS-3 <b>118.525</b>	DULUTH APP CON <b>125.45 233.7</b>	CLNC DEL <b>122.15</b>	UNICOM <b>122.8 (CTAF)</b>
--------------------------	---------------------------------------	---------------------------	-------------------------------



4 NM Holding Pattern		WEDNU		VGSI and RNAV glidepath not coincident (VGSI Angle 3.00/TCH 30).		2900	FIDUP
6000 ← 360°				NESIC			
3000 → 180°				2900		2900	
		180°		2900		*1.1 NM to RW18	
				*2200		RW18	
GP 3.00°		5.4 NM		2.2 NM		1.7 NM	
TCH 40						1.1	
CATEGORY	A	B	C	D			
LPV DA	1557-1 278 (300-1)				NA		
LNAV/VNAV DA	1539-1 260 (300-1)				NA		
LNAV MDA	1660-1	381 (400-1)	1660-1½ 381 (400-1½)	NA			
CIRCLING	1740-1 461 (500-1)	1860-1 581 (600-1)	1920-1¾ 641 (700-1¾)	NA			

