

WAAS CH 50426 W35A	APP CRS 358°	Rwy Ldg 8900 TDZE 4230 Apt Elev 4230
--	------------------------	---

RNAV (GPS) RWY 35

BRIGHAM CITY RGNL (BMC)

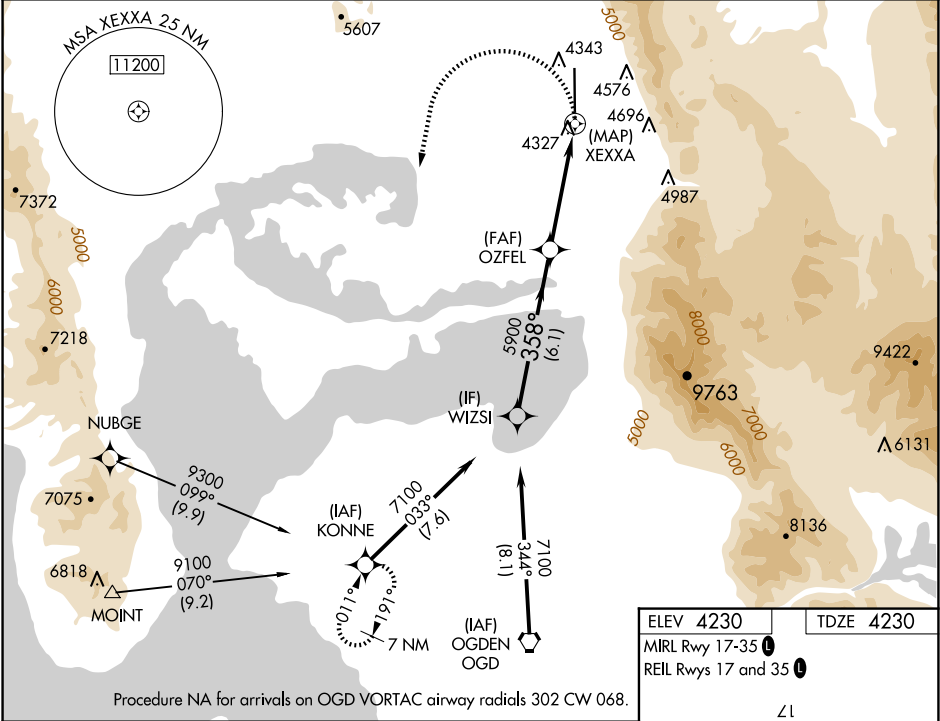
▼

NA

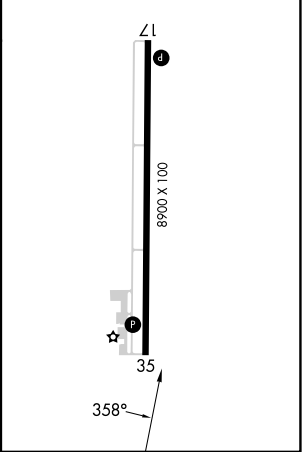
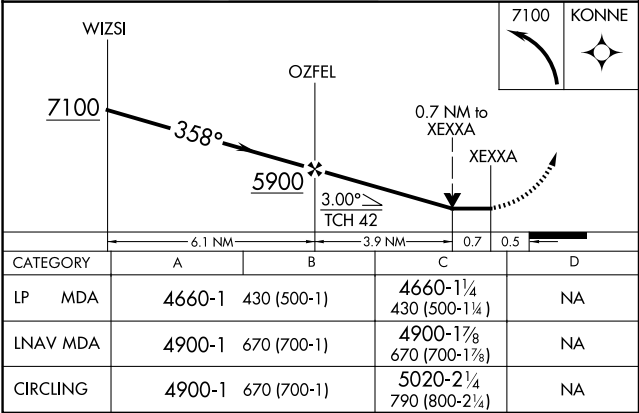
When local altimeter setting not received, use Ogden altimeter setting and increase all MDA 100 feet, increase LP Cat C visibility ¼ mile, increase LNAV Cat B visibility ¼ mile, and Cat C visibility ¾ mile, increase Circling Cat B visibility ¼ mile, and Cat C visibility ½ mile.
DME/DME RNP-0.3 NA. VDP NA with Ogden altimeter setting. Rwy 35 helicopter visibility reduction below ¾ SM NA.

MISSED APPROACH:
Climbing left turn to 7100
direct KONNE and hold.

AWOS-3 135.075	SALT LAKE CITY APP CON 121.1	CLNC DEL 126.0	UNICOM 123.05 (CTAF) 0
--------------------------	--	--------------------------	----------------------------------



ELEV 4230	TDZE 4230
MRL Rwy 17-35 0	
REL Rws 17 and 35 0	



SW-4, 10 JUL 2025 to 07 AUG 2025

SW-4, 10 JUL 2025 to 07 AUG 2025