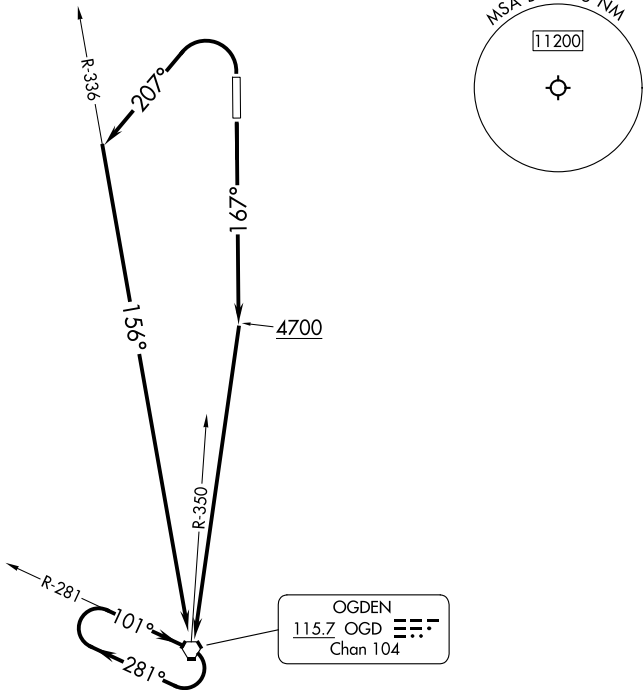


SALT LAKE CITY DEP CON  
121.1



TAKEOFF MINIMUMS

- Rwy 17: Standard.  
Rwy 35: Standard with minimum climb of 240' per NM to 6000 or 6200-5 for VCOA.

TAKEOFF OBSTACLE NOTES

- Rwy 17: Pole, vehicle on road beginning 265' from DER, 559' right of centerline, up to 33' AGL/4259' MSL.  
Pole 1063' from DER, 720' right of centerline, 36' AGL/4260' MSL.  
Poles beginning 1494' from DER, 588' right of centerline, up to 50' AGL/4274' MSL.  
Pole 2216' from DER, 1084' right of centerline, 82' AGL/4305' MSL.  
Rwy 35: Pole 9' from DER, 29' right of centerline, 6' AGL/4231' MSL.

NOTE: Chart not to scale.

DEPARTURE ROUTE DESCRIPTION

- TAKEOFF RUNWAY 17: Climb on heading 167° to 4700, then direct OGD VORTAC, continue climb in OGD VORTAC holding pattern to at or above MCA/MEA for route of flight.
- TAKEOFF RUNWAY 35: Climbing left turn on heading 207° and OGD R-336 to OGD VORTAC, continue climb in OGD VORTAC holding pattern to at or above MCA/MEA for route of flight.
- VCOA ALL RUNWAYS: Obtain ATC approval for VCOA when requesting IFR clearance. Climb in visual conditions to cross Brigham City Rgnl Airport southbound at or above 10300, then on OGD R-350 to OGD VORTAC before proceeding on course.

SW-4, 10 JUL 2025 to 07 AUG 2025

SW-4, 10 JUL 2025 to 07 AUG 2025