

APP CRS 066°	Rwy Idg	3801
	TDZE	628
	Apt Elev	635

RNAV (GPS) RWY 6

JACK BARSTOW (IKW)

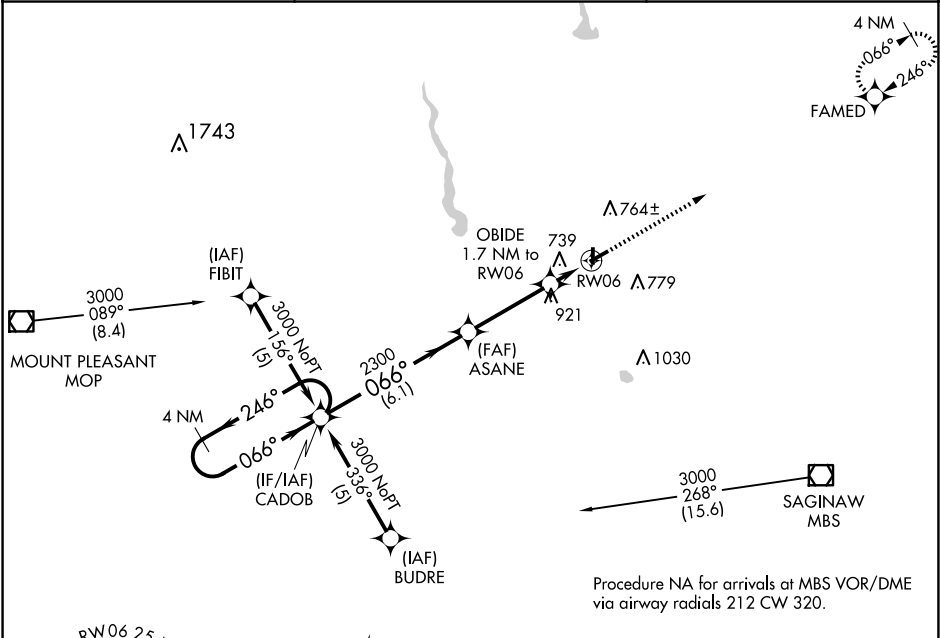
▼

▲

DME/DME RNP-0.3 NA. Rwy 24 helicopter visibility reduction below ¾ SM NA.
When local altimeter setting not received, use MBS Intl altimeter setting and increase all MDA 40 feet and LNAV Cat C visibility ¼ mile. Circling Rwy 18, 36 NA at night.

MISSED APPROACH: Climb to 3000 direct FAMED and hold.

AWOS-3 119.525	GREAT LAKES APP CON ★ 126.45 235.625	UNICOM 122.8 (CTAF) 0
--------------------------	------------------------------------------------	---------------------------------



MSA RW06 25 NM
2900

INDEX ▲
3000 018° (10.5)

4 NM Holding Pattern	CADOB	*1240 when using MBS Intl altimeter setting.	3000	FAMED
3000	246° 066°	ASANE	OBIDE 1.7 NM to RW06	
		3.04° TCH 32		
		*1200	RW06	
	6.1 NM	3.4 NM	1.7	

ELEV 635

TDZE 628

81

3001 X 75

3801 X 75

0.4% UP

36

066°

CATEGORY	A	B	C	D
LNAV MDA	1000-1	372 (400-1)		NA
CIRCLING	1120-1	485 (500-1)	1240-1¾ 605 (700-1¾)	NA

REIL Rwy 6, 18, 24, and 36 0
MIRL Rwy 6-24 and 18-36 0