

WAAS CH 72912 W24A	APP CRS 246°	Rwy Idg TDZE Apt Elev	3801 635 635
--	------------------------	-----------------------------	---

RNAV (GPS) RWY 24

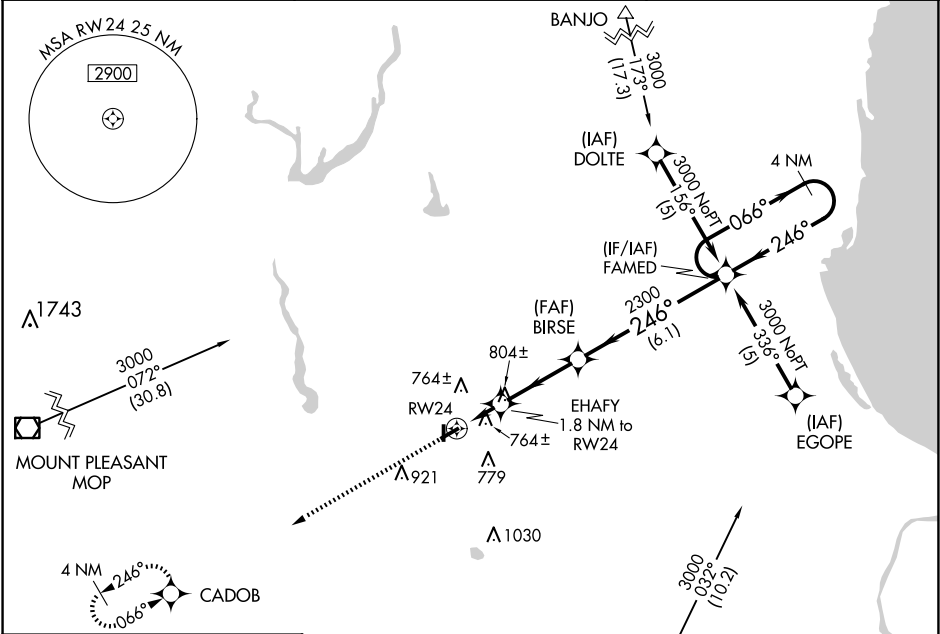
JACK BARSTOW (IKW)

⚠

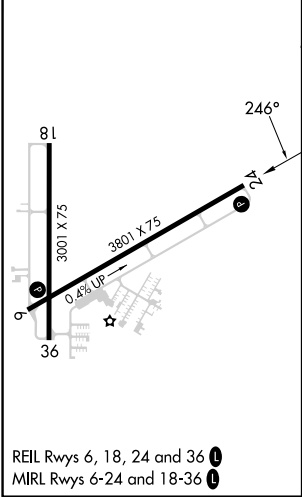
Baro-VNAV NA when using MBS Intl altimeter setting. For uncompensated Baro-VNAV systems, LNAV/VNAV NA below -16°C (4°F) or above 54°C (130°F). DME/DME RNP-0.3 NA. Rwy 24 helicopter visibility reduction below ¾ SM NA. When local altimeter setting not received, use MBS Intl altimeter setting and increase all DA 31 feet and all MDA 40 feet and all LPV visibility ¼ mile. Circling Rwy 18, 36 NA at night.

MISSED APPROACH:
Climb to 3000 direct
CADOB and hold.

AWOS-3 119.525	GREAT LAKES APP CON ★ 126.45 235.625	UNICOM 122.8 (CTAF) 0
--------------------------	--	---------------------------------



ELEV 635	TDZE 635
----------	----------



Procedure NA for arrivals at MBS VOR/DME via V45 southbound.		4 NM Holding Pattern	
3000	CADOB	VGSI and RNAV glidepath not coincident (VGSI Angle 3.00/TCH 24).	
*LNAV only.		BIRSE	FAMED
EHAFF 1.8 NM to RW24		246°	3000
RW24		2300	GP 3.00° TCH 53
1.8		3.2 NM	6.1 NM
CATEGORY	A	B	C
LPV DA	1021-1¼	386 (400-1¼)	NA
LNAV/VNAV DA	1068-1½	433 (500-1½)	NA
LNAV MDA	1060-1	425 (500-1)	1060-1¼ 425 (500-1¼)
CIRCLING	1120-1	485 (500-1)	1240-1¾ 605 (700-1¾)