

WAAS CH <b>86308</b> <b>W35A</b>	APP CRS <b>347°</b>	Rwy Idg <b>3828</b> TDZE <b>698</b> Apt Elev <b>698</b>
--	------------------------	---

RNAV (GPS) RWY 35  
SKY ACRES (44N)

RNP APCH.

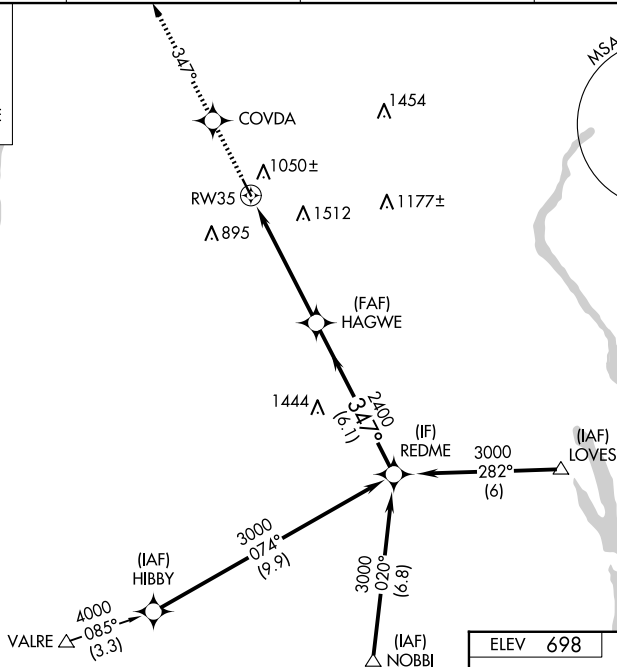
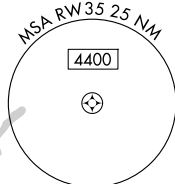
 T  
 A NA  
 -23°C

Use Newburgh altimeter setting; when not received use Poughkeepsie altimeter setting and increase LPV DA to 1063, and all MDA 20 feet.

**MISSED APPROACH:** Climb to 3000 direct COVDA and via 347° track to JSSIE and hold.

SWF ASOS <b>124.575</b>	POU ASOS <b>126.75</b>	NEW YORK APP CON <b>132.75 363.1</b>	UNICOM <b>122.8 (CTAF) 0</b>
----------------------------	---------------------------	---	---------------------------------

MISSED APCH FIX



Procedure NA for arrivals at NOBBI  
via V123-405-483 southbound.

Diagram illustrating the runway layout for MRL Rwy 17-35. The runway is labeled 3328 X 60. The heading is 347°. The diagram also shows a 1.332 Up arrow and a 35° angle.

3000  
↑  
COVDA  
tr  
347°  
JSSIE  
HAGWE  
RW35  
347°  
2400  
3000  
5.2 NM  
6.1 NM  
REDME  
Procedure Turn NA  
GP 3.00°  
TCH 40°

CATEGORY	A	B	C	D
LPV DA	1046-1¼	348 (400-1¼)		NA
LNAB MDA	1700-1¼ 1002 (1100-1¼)	1700-1½ 1002 (1100-1½)		NA