

WAAS CH 56436 W20A	APP CRS 199°	Rwy Idg 6506 TDZE 303 Apt Elev 303	RNAV (GPS) RWY 20 HEART OF GEORGIA RGNL (E2M)
--	------------------------	---	---

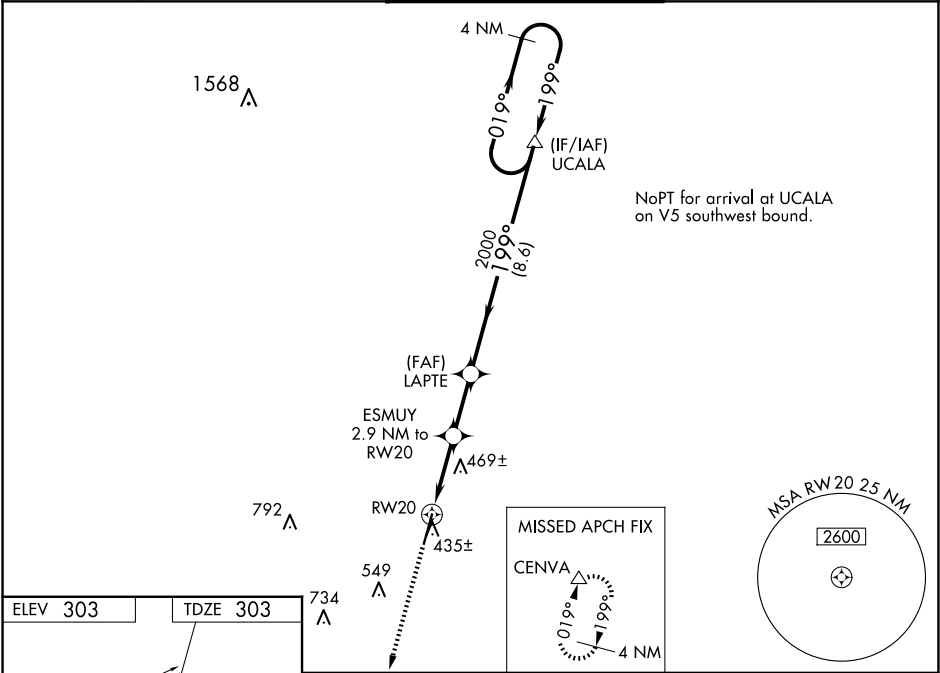
▼

▲

Baro-VNAV NA when using Dublin altimeter setting. For uncompensated Baro-VNAV systems, LNAV/VNAV NA below -15°C (5°F) or above 54°C (130°F). When local altimeter setting not received, use Dublin altimeter setting and increase all DA 52 feet and all MDA 60 feet; increase LPV all Cats and LNAV Cat C/D visibility ¼ mile and LNAV/VNAV all Cats and Circling Cat C visibility ¼ mile. DME/DME RNP-0.3 NA. VDP NA with Dublin altimeter setting. Helicopter visibility reduction below ¾ SM NA.

MISSED APPROACH:
Climb to 2000 direct CENVA and hold.

ATIS 119.425	JACKSONVILLE CENTER 127.575 269.025	HEART OF GEORGIA TOWER ★ 124.55 (CTAF) 0	GND CON 121.175	UNICOM 122.95
------------------------	---	--	---------------------------	-------------------------



ELEV 303	TDZE 303				
199° to RW20		2000	CENVA		
*LNAV only.		ESMUY 2.9 NM to RW20	LAPTE 2000	UCALA 2100	4 NM Holding Pattern
1.2		1.7 NM	2.3 NM	8.6 NM	GP 3.00° TCH 45
CATEGORY	A	B	C	D	
LPV DA	602-1 299 (300-1)				
LNAV/VNAV DA	722-1⅜ 417 (500-1⅝)				
LNAV MDA	720-1	417 (500-1)	720-1¼	417 (500-1¼)	
CIRCLING	760-1 457 (500-1)	820-1 517 (600-1)	900-1½ 597 (600-1½)	900-2 597 (600-2)	