

WAAS CH 82104 W02A	APP CRS 019°	Rwy Idg 6506 TDZE 300 Apt Elev 303
--	------------------------	---

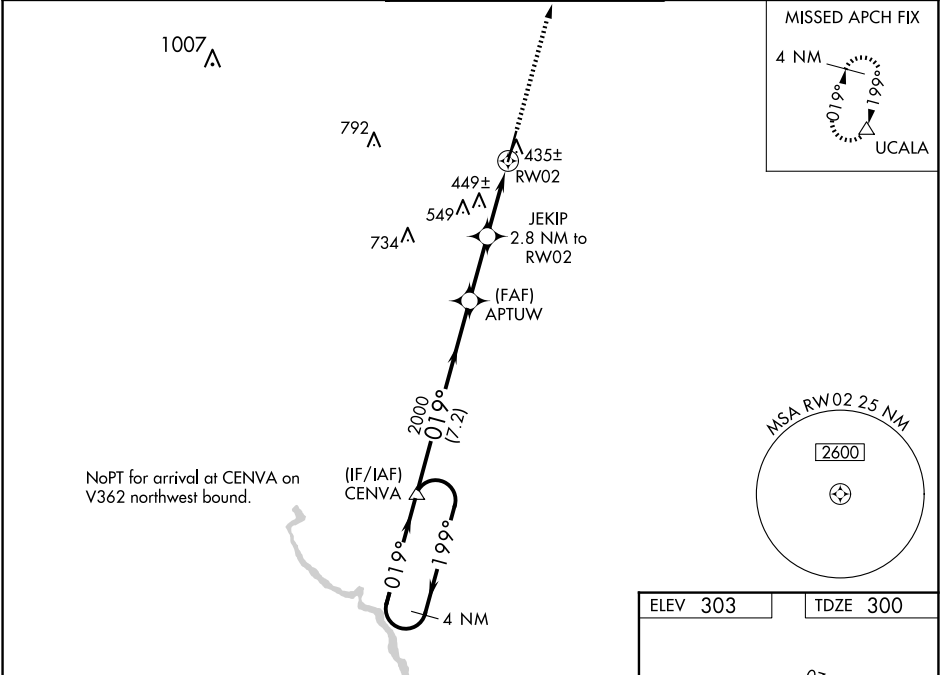
RNAV (GPS) RWY 2
HEART OF GEORGIA RGNL (E2M)

⚠ Baro-VNAV NA when using Dublin altimeter setting. For uncompensated Baro-VNAV systems, LNAV/VNAV NA below -15°C (5°F) or above 54°C (130°F). When local altimeter setting not received, use Dublin altimeter setting and increase all DA 52 feet and all MDA 60 feet; increase LNAV/VNAV all Cats, LNAV Cat C/D and Circling Cat C visibility ¼ miles. DME/DME RNP-0.3 NA. VDP NA with Dublin altimeter setting.

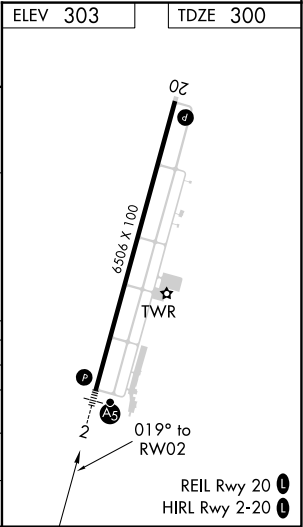
MALSR

MISSED APPROACH:
Climb to 2100 direct UCALA and hold.

ATIS 119.425	JACKSONVILLE CENTER 127.575 269.025	HEART OF GEORGIA TOWER ★ 124.55 (CTAF) 0	GND CON 121.175	UNICOM 122.95
------------------------	---	--	---------------------------	-------------------------



VGSI and RNAV glidepath not coincident (VGSI Angle 3.00/TCH 45).					2100	UCALA
4 NM Holding Pattern					*LNAV only.	
GP 3.00° TCH 49					*1.1 NM to RWY 2	
CENVA					RWY 2	
APTUW					JEKIP 2.8 NM to RWY 2	
2000					*1220	
7.2 NM					2.4 NM	
1.7 NM					1.1	
CATEGORY	A	B	C	D		
LPV DA	500-½		200 (200-½)			
LNAV/VNAV DA	595-½		295 (300-½)			
LNAV MDA	700-½ 400 (400-½)		700-¾ 400 (400-¾)			
CIRCLING	760-1 457 (500-1)		820-1 517 (600-1)		900-1½ 597 (600-1½)	
					900-2 597 (600-2)	



SE-4, 10 JUL 2025 to 07 AUG 2025

SE-4, 10 JUL 2025 to 07 AUG 2025