

LOC I-HUV  
**109.55**

APP CRS  
**019°**

Rwy Idg **6506**  
TDZE **300**  
Apt Elev **303**

ILS or LOC RWY 2  
HEART OF GEORGIA RGNL (E.Z.M)

⚠

When local alimeter setting not received, use Dublin alimeter setting and increase all DA 52 feet and all MDA 60 feet; increase S-LOC 2 Cat C/D and Circling Cat C visibility ¼ mile.

MALSR

MISSED APPROACH: Climb to 800 then climbing right turn to 2000 on heading 180° and DBN VORTAC R-214 to CENVA INT and hold.

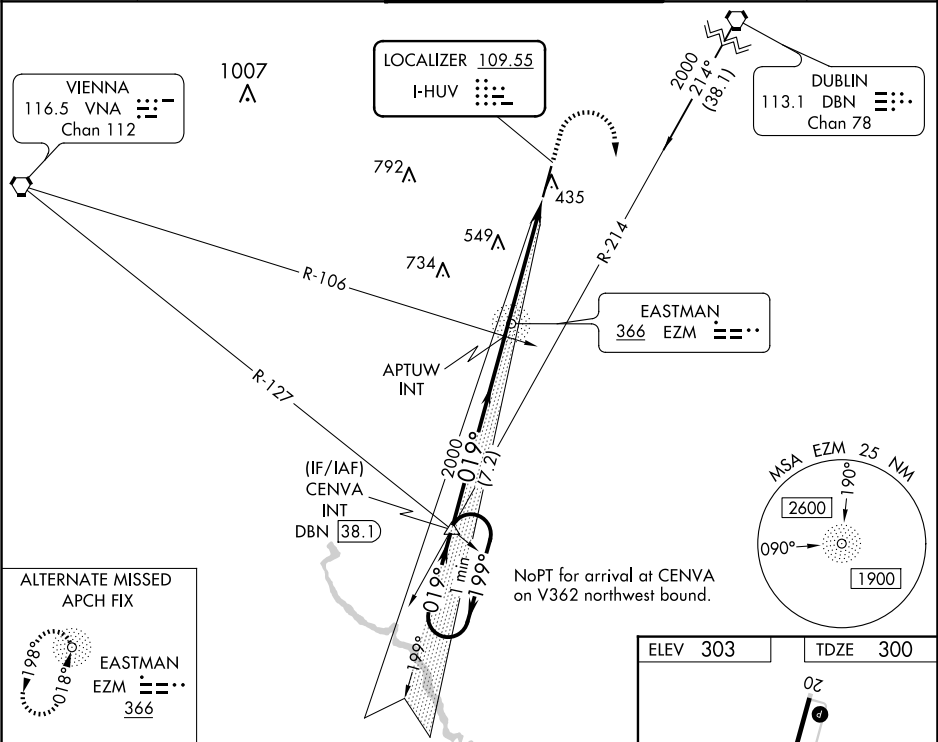
ATIS  
**119.425**

JACKSONVILLE CENTER  
**127.575 269.025**

HEART OF GEORGIA TOWER ★  
**124.55 (CTAF) 0**

GND CON  
**121.175**

UNICOM  
**122.95**



VGSI and ILS glidepath not coincident (VGSI Angle 3.00/TCH 45).

One Minute Holding Pattern

CENVA INT

APTUW INT

800

2000

DBN R-214

CENVA

GS 3.00° TCH 49

7.2 NM

5.2 NM

CATEGORY	A	B	C	D
S-ILS 2	500-½ 200 (200-½)			
S-LOC 2	820-½ 520 (600-½)		820-1 520 (600-1)	
CIRCLING	820-1 517 (600-1)		900-1½ 597 (600-1½) 900-2 597 (600-2)	

ELEV 303

TDZE 300

FAF to MAP 5.2 NM

Knots	60	90	120	150	180
Min:Sec	5:12	3:28	2:36	2:05	1:44