

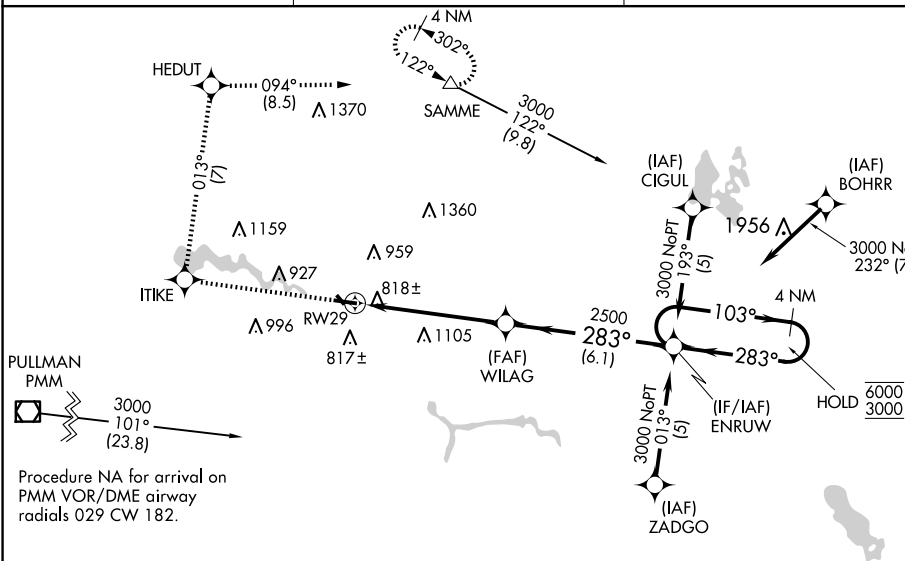
RNAV (GPS) RWY 29
PADGHAM FLD (35D)

Circling NA to Rwy 15 and 33. Rwy 29 helicopter visibility reduction below $\frac{3}{4}$ SM NA. Use Holland altimeter setting; when not received, use Grand Rapids altimeter setting and increase all MDAs 40 feet and LNAV Cat C visibility $\frac{1}{2}$ SM.

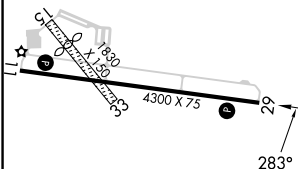
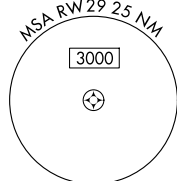
MISSED APPROACH: Climb to 3000
direct ITKE and on track 013°
to HEDUT and track 094° to SAMME
and hold.

GREAT LAKES APP CON ★
128.4 257.6

UNICOM
122.8 (CTAF) **L**



ELEV	706		TDZE	705
------	-----	--	------	-----



REIL Rwy 11 and 29 **L**
MIRL Rwy 11-29 **L**

