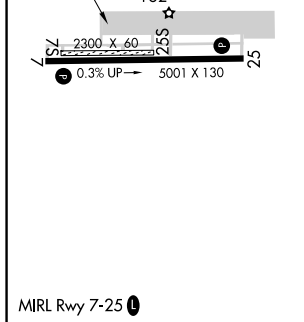
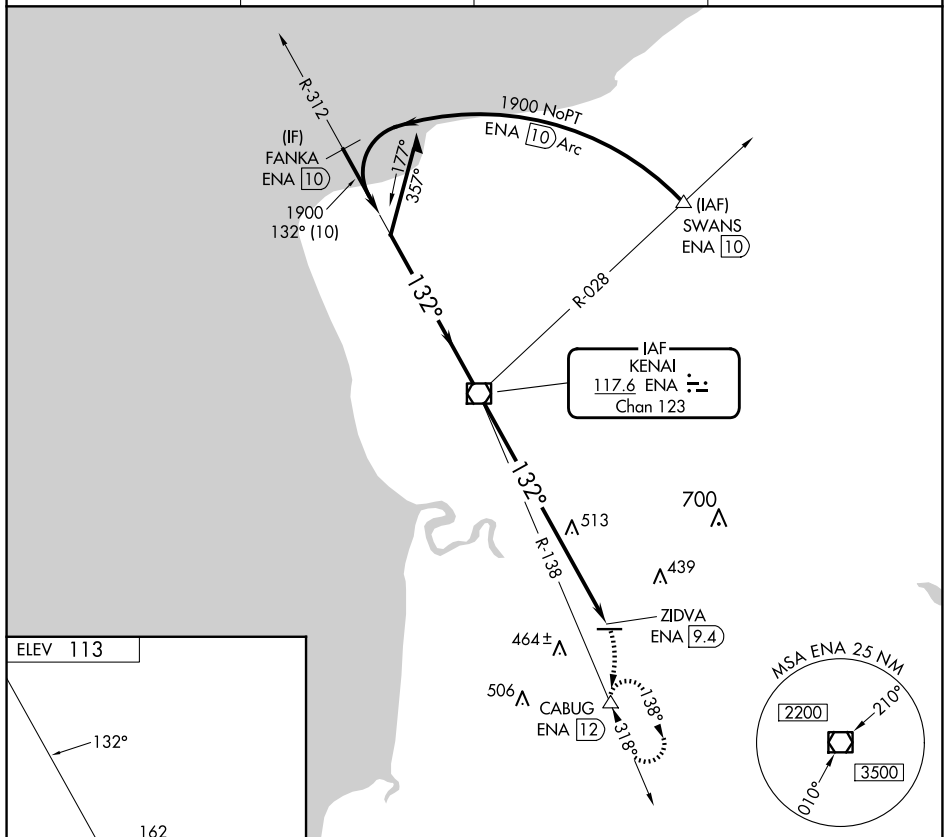


VOR/DME ENA 117.6 Chan 123	APP CRS 132°	Rwy Idg TDZE Apt Elev	N/A N/A 113
--	------------------------	-----------------------------	--

VOR-A
SOLDOTNA (SXQ)(PASX)

DME required.		<p>MISSED APPROACH: Climbing right turn to 3700 on heading 184° and on ENA R-138 to CABUG/ENA 12 DME and hold, continue climb-in-hold to 3700.</p>
<p>T Circling NA to Rwy 7S and 25S.</p> <p>A Circling Rwy 7 NA at night.</p>		

AWOS-3P 135.45	ANCHORAGE CENTER 125.7 379.1	KENAI RADIO 122.35	CTAF 122.50
--------------------------	--	------------------------------	-----------------------



Remain within 10 NM

ENR
VOR/DME
6000

3700
hdg
184°

ENR
R-138

CUGAB
△

1900

312°

132°

1900

X

ZIDVA
ENR 9.4

9.4 NM

CATEGORY	A	B	C	D
C CIRCLING	1020-1¼	907 (1000-1¼)	1020-2¾ 907 (1000-2¾)	1020-3 907 (1000-3)