

SOLDOTNA, ALASKA

AL-5464 (FAA)

24361

WAAS CH <b>86236</b> <b>W25A</b>	APP CRS <b>255°</b>	Rwy Idg <b>5001</b> TDZE <b>113</b> Apt Elev <b>113</b>
--	------------------------	---

RNAV (GPS) RWY 25  
SOLDOTNA (SXQ)(PASX)

RNP APCH - GPS.

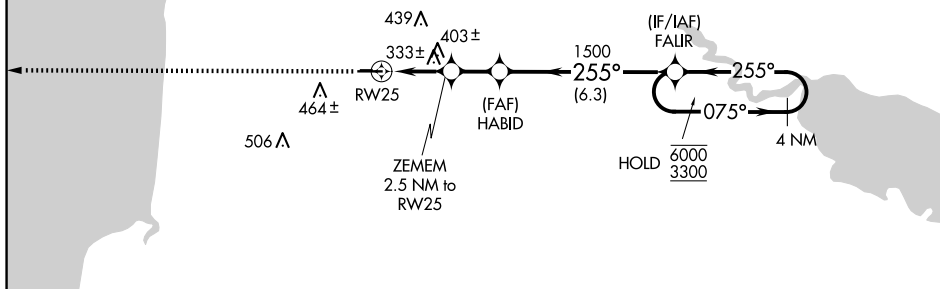
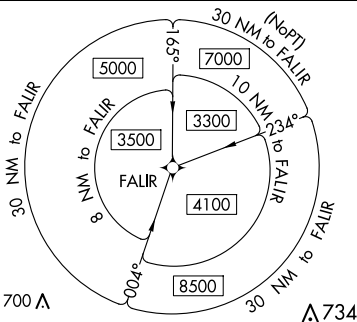
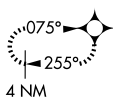
**T** Circling NA to Rwy 7S and 25S. Circling Rwy 7 NA at night.  
**A** Rwy 25 helicopter visibility reduction below  $\frac{3}{4}$  SM NA.

**MISSED APPROACH:** Climb to 2600 direct BERAC and hold.

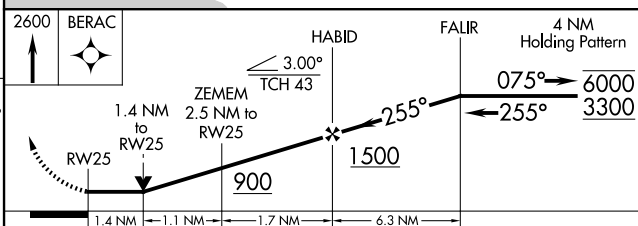
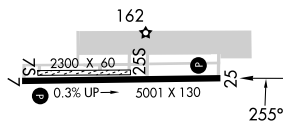
AWOS-3P <b>135.45</b>	ANCHORAGE CENTER <b>125.7 379.1</b>	KENAI RADIO <b>122.35</b>	CTAF <b>122.5</b>
--------------------------	--	------------------------------	----------------------


MISSED APCH FIX

BERAC



ELEV 113		TDZE 113
----------	--	----------



CATEGORY	A	B	C	D
LP MDA	600-1	487 (500-1)	600-1 $\frac{3}{8}$	487 (500-1 $\frac{3}{8}$ )
LNAV MDA	660-1	547 (600-1)	660-1 $\frac{5}{8}$	547 (600-1 $\frac{5}{8}$ )
 CIRCLING	740-1 627 (700-1)	820-1 707 (800-1)	820-2 707 (800-2)	980-2 $\frac{3}{4}$ 867 (900-2 $\frac{3}{4}$ )

SOLDOTNA, ALASKA

Amdt 2A 26DEC24

SOLDOTNA (SXQ)(PASX)

60°29'N-151°02'W

## RNAV (GPS) RWY 25

AK, 12 JUN 2025 to 07 AUG 2025